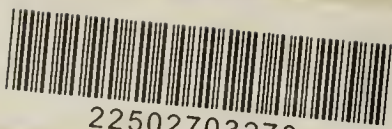




O. ix. e.



22502703278

WELLS FARGO  
LIBRARY

General Collections

M

11137



# Catalogues of Ethnographical Specimens

FROM

AUSTRALIA, NEW ZEALAND, HERVEY ISLAND, MARQUISAS, NEW GUINEA, NEW IRELAND,  
TAHITI, SAMOA, TONGA, SOLOMON ISLANDS, NEW CALEDONIA, NORFOLK ISLAND,  
ADMIRALTY ISLANDS, and other parts of POLYNESIA; BENIN CITY, and other parts of AFRICA,  
various parts of NORTH and SOUTH AMERICA, THE MALAY ARCHIPELAGO, and other localities.

Illustrated Series with over 100 colotype plates

Exhibiting upwards of 1,200 specimens.

IN THE POSSESSION OF

W. D. WEBSTER of BICESTER, OXON.

(FOURTH SERIES.)



Leicester :

BERNARD HALLIDAY, DRYDEN HOUSE.

1911.

21187

Journal of

Psychological Experiments

Volume 10, No. 1, 1924

Published by the American Psychological Association

Washington, D. C.



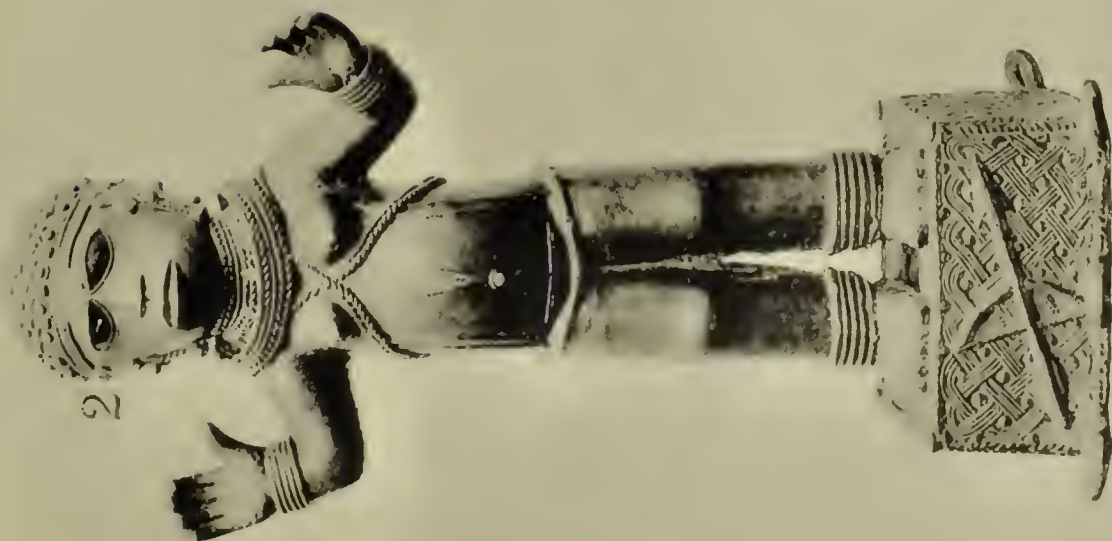
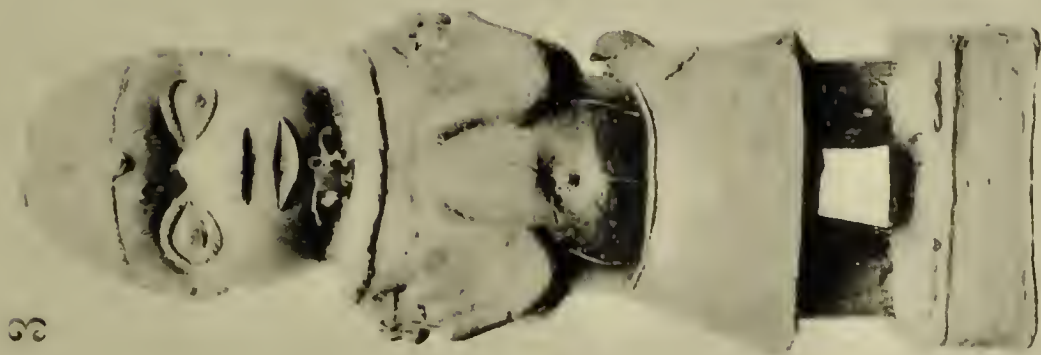
1



1









5



6



7



8



9



10

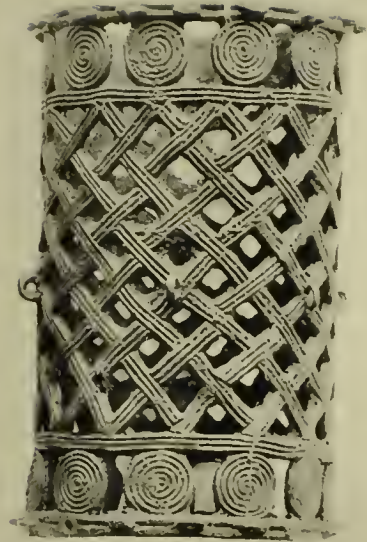
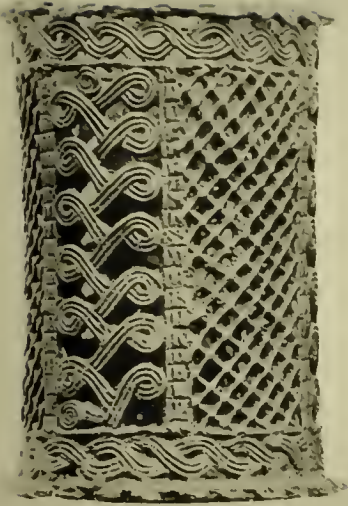




11

12

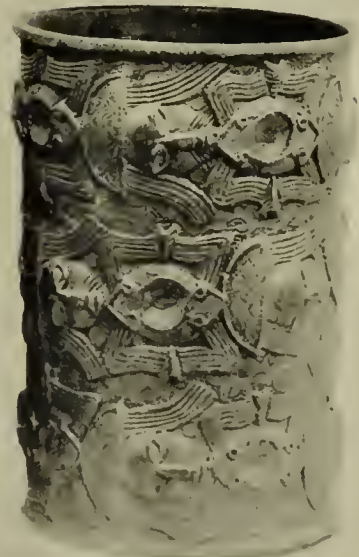
13



14

15

16





17



18



19



20



21



22







23



24





26

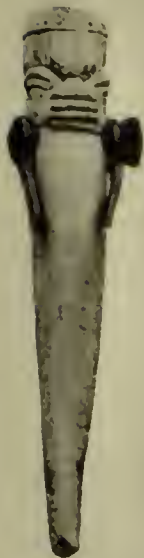


25





27



28



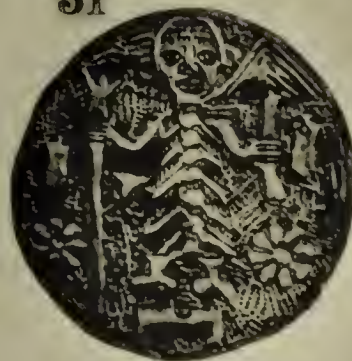
29



30



31

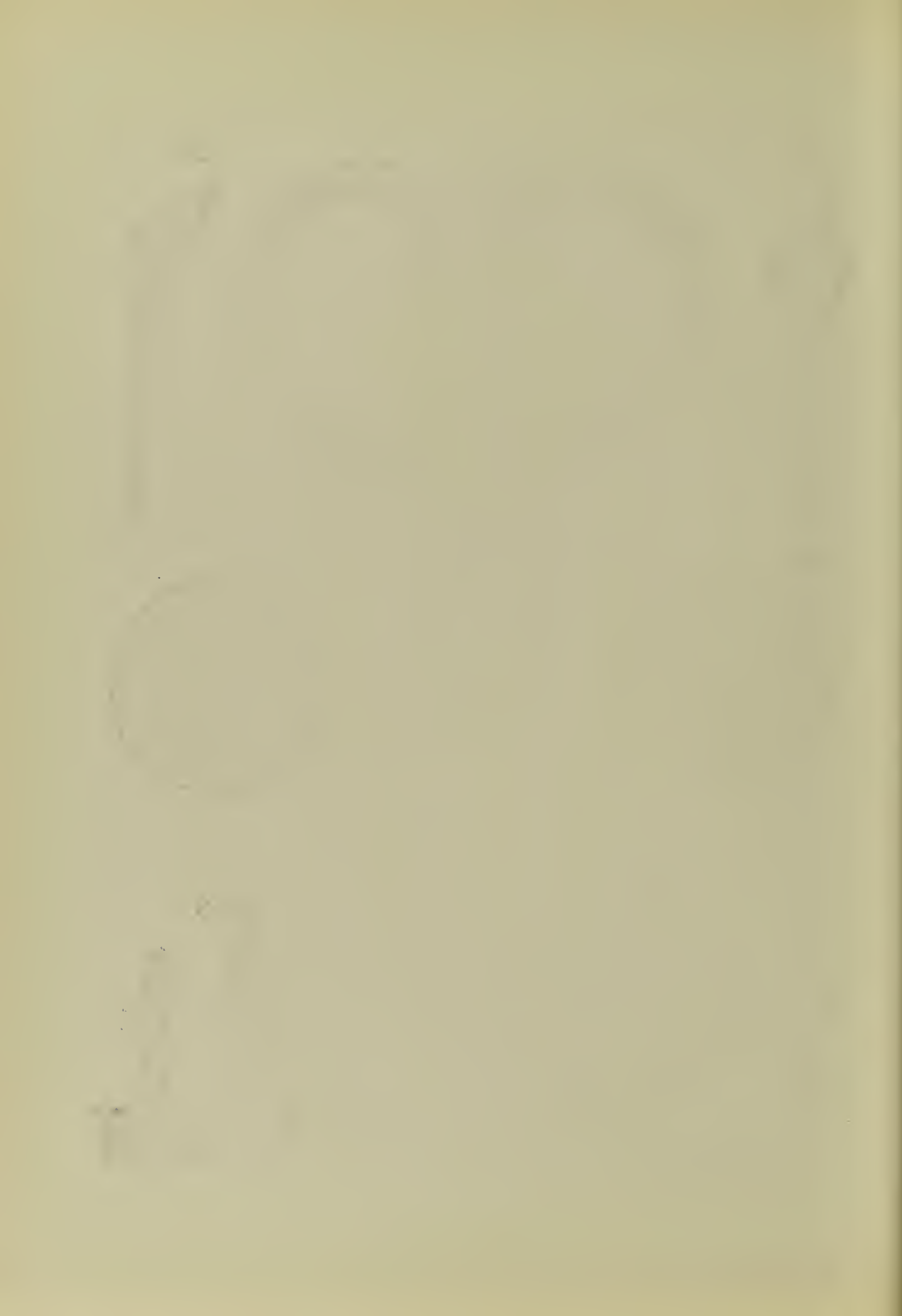


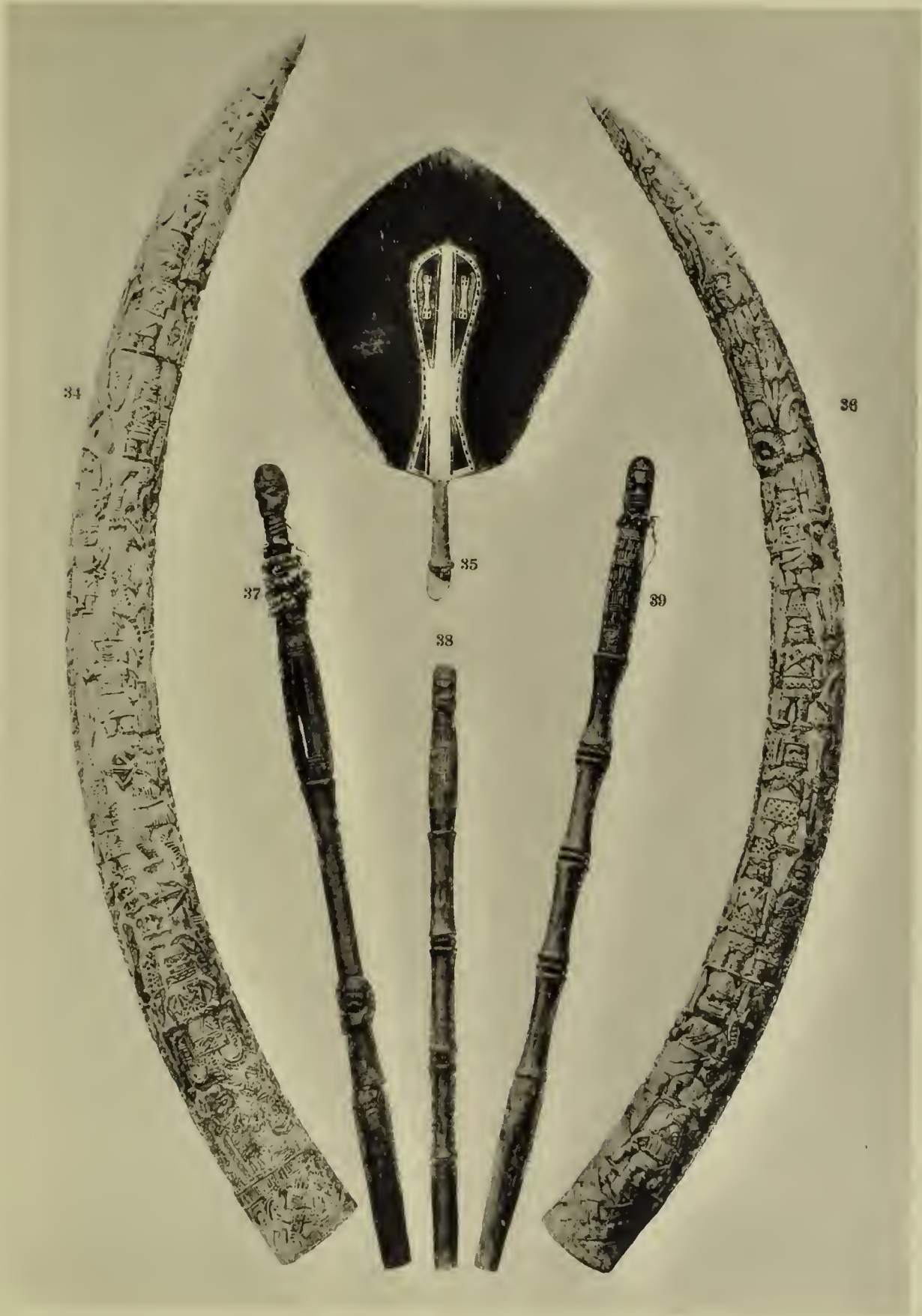
32



33

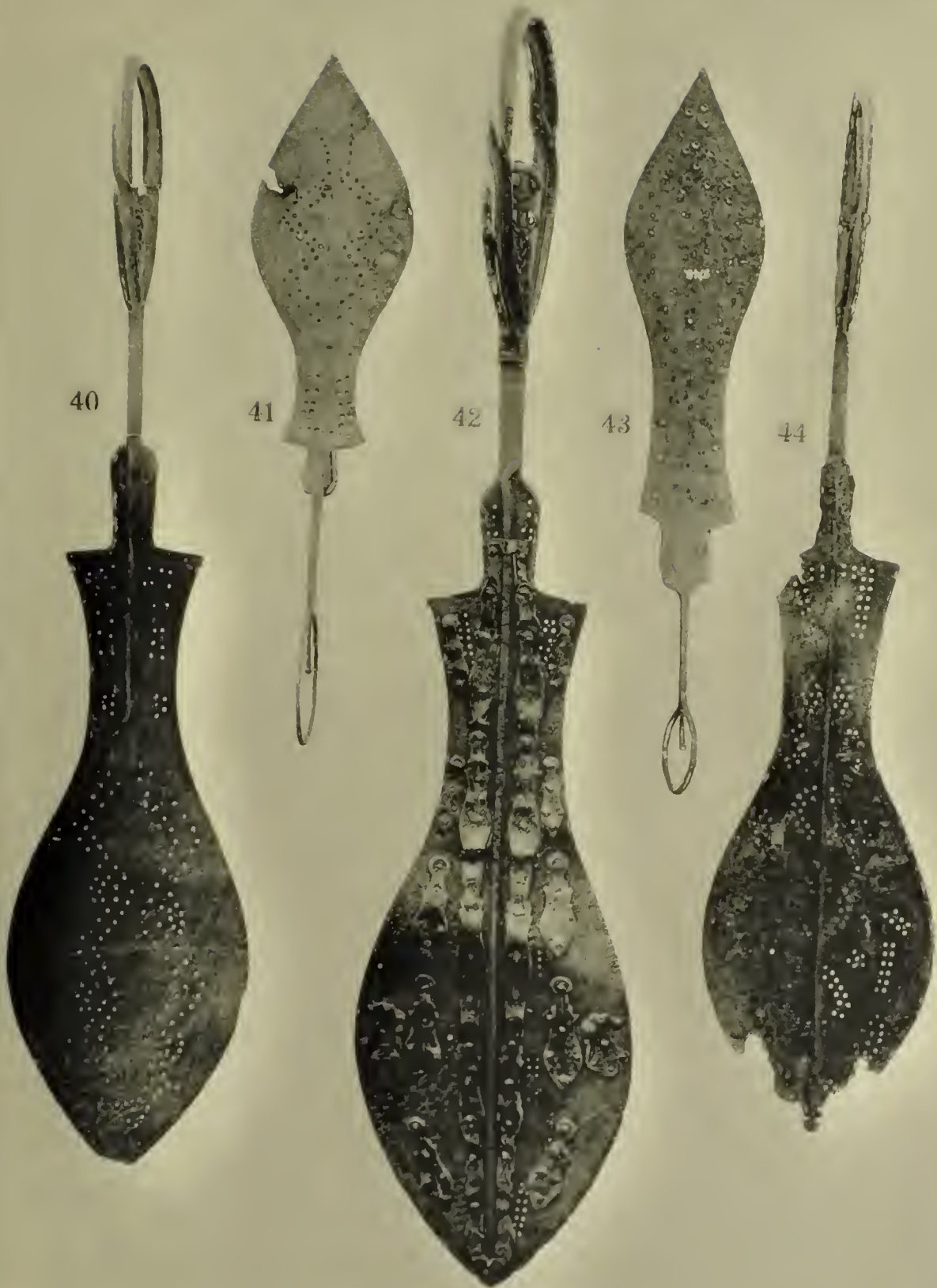








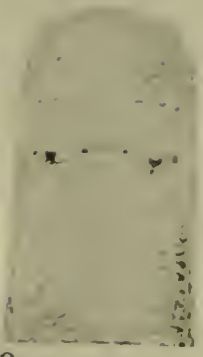








45



46



47



48



49



50



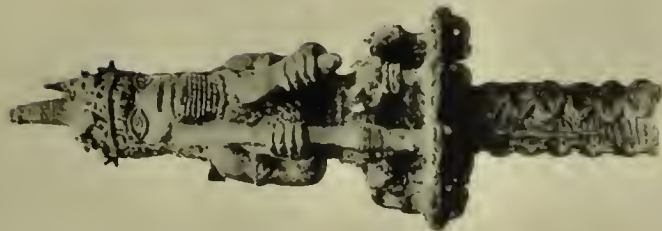
51



54



53



52







56



55

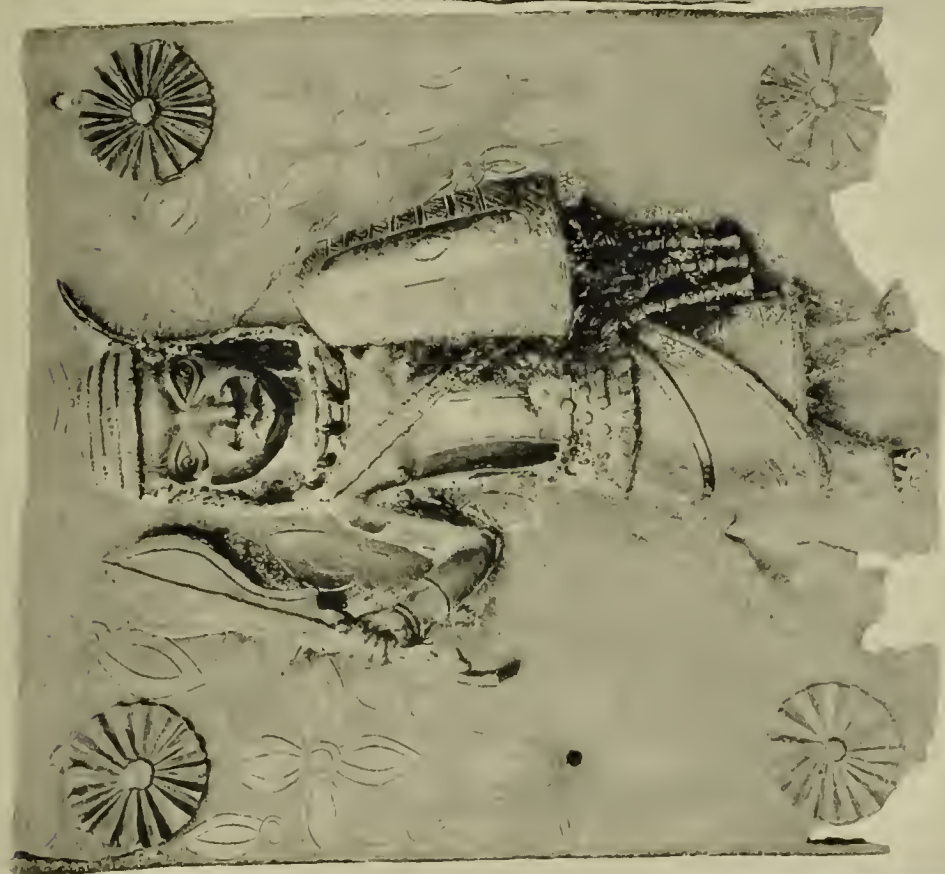




59



58



57









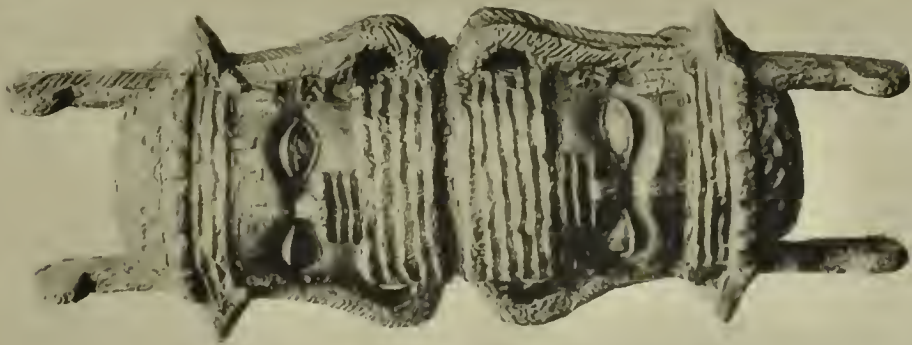
83



82



81







84



85



86



87



88



89



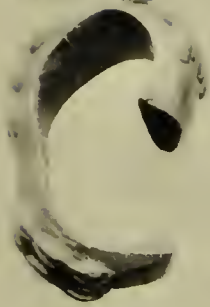








92



93



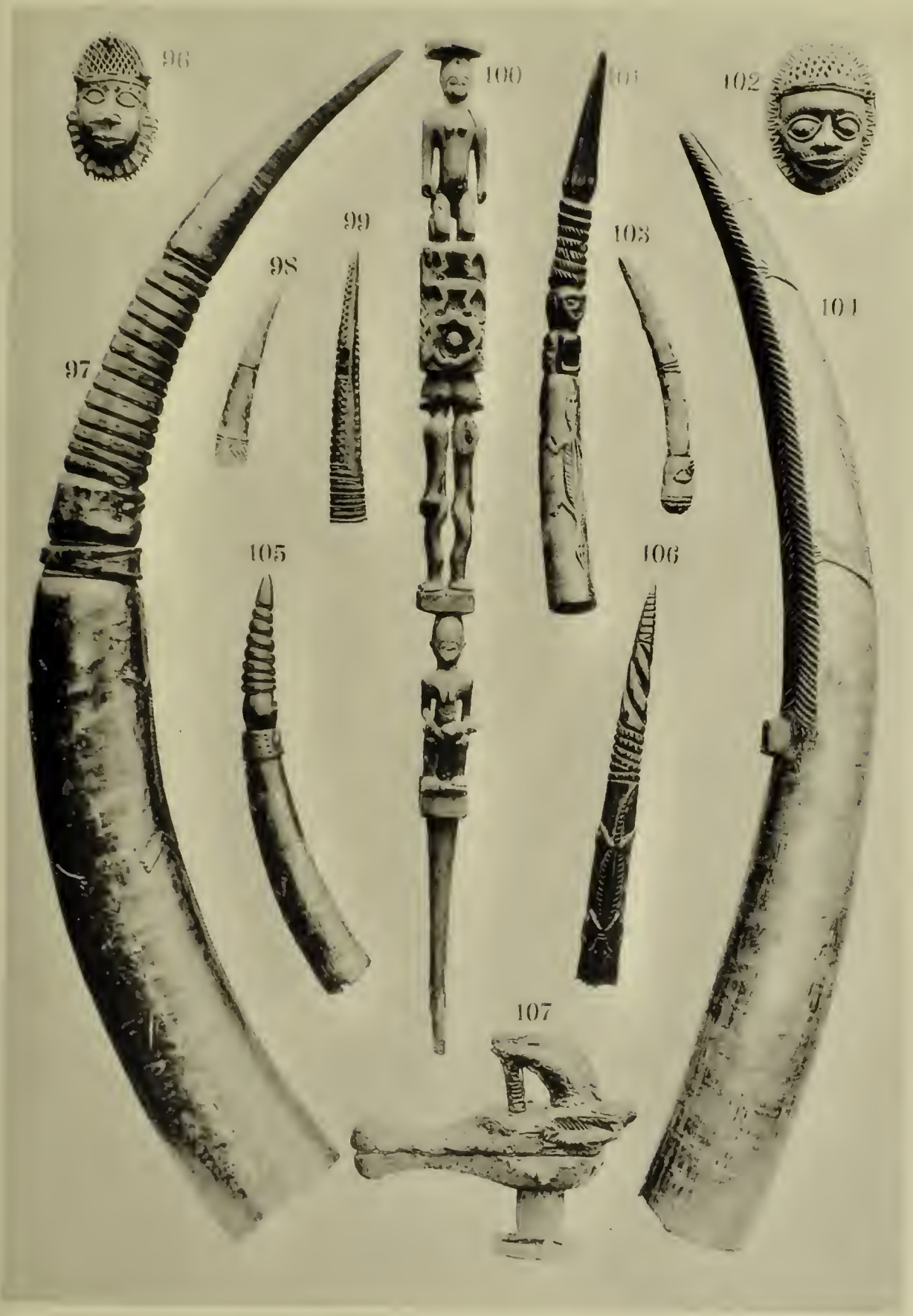
94



95







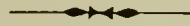


## CATALOGUE No. 24,

Of Ethnographical Specimens in Bronze, Wrought Iron, Ivory, and Wood, from Benin City, West Africa, taken at the fall of the City in February, 1897, by the British Punitive Expedition under the command of Admiral Rawson.

PUBLISHED BY

W. D. WEBSTER, COLLECTOR OF ETHNOLOGICAL SPECIMENS,  
OXFORD HOUSE, BICESTER, OXON, ENGLAND.



			<i>£</i>	<i>s.</i>	<i>d.</i>
1	(9742)	Bronze figure of a king, with head dress similar to the large bronze mask bases, but from centre of same projects a ceremonial sword handle, which is finely engraved; in his right hand he holds a ceremonial sword similar to the one illustrated (No. 42), and in the left a curious staff or sceptre, at the top of which is a cup with five projections, each ending with a leopard's head; the handle is ornamented with snakes and the cup with a mask, at the base projects a long bronze nail, 18 $\frac{3}{4}$ inches high	50	0	0
2	(9794)	Bronze figure, said to represent a queen of Benin, wearing a curious head dress, necklet, armlets, and anklets, standing on a square base, which is decorated with interlaced ornamentation and a bow and arrow in front, 18 $\frac{3}{4}$ inches high	45	0	0
3	(9366)	Bronze figure, wearing a head dress ornamented with a snake in front, and dress with engraved decoration, standing on a base and holding his hands upwards with palms outwards, 17 inches high	30	0	0
4	(9795)	Bronze figure, representing a Portuguese soldier of the 17th century firing a flint-lock gun, he is also armed with a sword, two pistols, and a dagger; the figure stands on a square base, which is ornamented with six figures on sides, and on top with two human heads, two flint-lock pistols with bullets for same, a crossbow and a staff or halberd, 17 $\frac{3}{4}$ inches high	50	0	0
5	(9772)	Bronze bell, with engraved ornamentation and a mask in relief on the front side, 7 $\frac{1}{4}$ inches high, 3 $\frac{3}{4}$ inches square	4	0	0
6	(9771)	do. 7 $\frac{1}{2}$ do. 4 $\frac{1}{4}$ do. ... ..	5	0	0
7	(9754)	do. 6 $\frac{1}{2}$ do. 3 $\frac{1}{2}$ do. ... ..	5	0	0
8	(9774)	do. 7 $\frac{1}{4}$ do. 3 $\frac{1}{2}$ do. ... ..	4	0	0
9	(9813)	Bronze bell in the form of a mask, one of the oldest specimens found in Benin, 7 $\frac{3}{4}$ inches high, 4 $\frac{1}{4}$ inches diameter	7	10	0
10	(9773)	Bronze bell with engraved ornamentation and a mask in relief on the front side, 6 $\frac{1}{4}$ inches high, 3 $\frac{1}{2}$ inches square	4	0	0
11	(9497)	Bronze armlet with openwork ornamentation, 5 inches broad	3	10	0
12	(9779)	Ivory armlet of a dark brown colour, finely carved with figures, 4 $\frac{3}{4}$ inches broad...	10	0	0
13	(9819)	Bronze armlet with openwork ornamentation, 5 $\frac{1}{4}$ inches broad	3	10	0
14	(9818)	Bronze armlet ornamented with four figures, 4 $\frac{3}{4}$ inches broad	10	0	0

## CATALOGUE No. 24.

			£	s.	d
15	(9777)	Ivory armband in two pieces, one carved inside the other but not detachable, and cut out of one piece, carved with figures, &c., a very fine example of old Benin art, $4\frac{3}{4}$ inches broad ... ..	15	0	0
16	(9801)	Bronze armband ornamented with masks and fish, all finely chiselled and in relief, one of the finest examples of Benin metal work, $5\frac{1}{4}$ inches broad...	10	0	0
17	(9748)	Bronze mask pendant, 6 inches high, 5 inches broad ... ..	5	0	0
18	(9747)	Bronze pendant in the form of a leopard's head with iron eyes and copper spots, $6\frac{1}{2}$ inches high, $4\frac{1}{4}$ inches broad ... ..	7	10	0
19	(9750)	Bronze mask pendant $5\frac{3}{4}$ inches high, $4\frac{1}{2}$ inches broad ... ..	5	0	0
20	(7610)	Bronze mask pendant, $6\frac{3}{4}$ inches high, $4\frac{1}{4}$ inches broad ... ..	7	10	0
21	(9787)	Bronze pendant in the form of a leopard's head with iron eyes and copper spots, $7\frac{1}{4}$ inches high, $5\frac{1}{4}$ inches broad ... ..	7	10	0
22	(9786)	Bronze pendant, $7\frac{1}{2}$ inches high, 4 inches broad ... ..	7	10	0
23	(9756)	Bronze plaque with figure of a native in relief holding up a shield to protect a leopard which reclines on his right side; the costume consists of a curious head dress, coral necklet with bell attached, and a leopard skin hangs from his shoulders, $20\frac{1}{2}$ inches high, 10 inches broad ... ..	20	0	0
24	(9759)	Bronze plaque with a fish in relief holding a smaller one in its mouth; the corners are ornamented with rosettes, 19 inches long, 7 inches high ...	12	10	0
25	(9755A)	Bronze plaque representing a figure of a Portuguese holding a sceptre or halberd in his right hand and a sword in the left; the background is ornamented with engraved decoration and four pieces of ring money in relief, 18 inches high, 14 inches broad ... ..	20	0	0
26	(9757)	Bronze plaque representing two natives, one armed with two short swords and the other has been evidently holding something in his hands which has been broken off, 17 inches high, $9\frac{1}{2}$ inches broad ... ..	25	0	0
27	(9797)	Ivory fetish with carved human head on top; below the same there is an iron bolt with two movable iron arms attached, $10\frac{1}{4}$ inches long ...	2	10	0
28	(9806)	Piece of hammered brass ornamented with a crocodile in the centre, probably the mounting from a saddle, 17 by $14\frac{3}{4}$ inches ... ..	2	0	0
29	(9800)	Bronze ceremonial knife; the handle is ornamented on both sides, representing a snake swallowing a man, $10\frac{3}{4}$ inches long ... ..	3	0	0
30	(9805)	Circular plaque of hammered brass, representing a native holding a ceremonial sword, $6\frac{3}{4}$ inches diameter ... ..	2	0	0
31	(9804)	Circular plaque of hammered brass, representing a native holding a wood staff, $6\frac{3}{4}$ inches diameter ... ..	2	0	0
32	(9758)	Bronze plaque, representing a leopard wearing a coral necklet, 7 inches high, $12\frac{3}{4}$ inches long ... ..	12	10	0
33	(9760)	Two bronze female figures holding short ceremonial staffs with birds on top in their left hands, $7\frac{1}{2}$ inches high ... ..	7	10	0
34	(9767)	Elephant tusk, elaborately carved with representations of warriors, crocodiles, fish, &c., $72\frac{1}{4}$ inches long ... ..	85	0	0
35	(9831)	Fan of hide partly painted white, 18 inches broad ... ..	0	10	0
36	(9766)	Elephant tusk, similar to No. 34, $77\frac{1}{2}$ inches long ... ..	80	0	0



## CATALOGUE No. 24.

						£	s.	d.
37	(9783)	Carved wood ceremonial staff with rattle at top, 47½ inches long	..	...	...	3	0	0
38	(9785)	do. do. 35½ do.	...	...	...	2	0	0
39	(9784)	do. do. 48½ do.	...	...	...	2	10	0
40	(9744)	Wrought-iron ceremonial sword, with pierced blade, 38¾ inches long, 9 inches broad	...	...	...	20	0	0
41	(9745)	Wrought-iron ceremonial sword, with pierced blade, 25 inches long, 6 inches broad	...	...	...	2	10	0
42	(9466)	Ceremonial sword, with finely engraved bronze handle and wrought-iron blade, which is ornamented with representations of leopards and swords in hammered brass, 45¾ inches long, 10½ inches broad	...	...	...	40	0	0
43	(9746)	Wrought-iron ceremonial sword, with pierced blade, 26½ inches long, 5½ inches broad	...	...	...	2	10	0
44	(9743)	Wrought-iron ceremonial sword, with pierced blade, 38¼ inches long, 8¾ inches broad	...	...	...	2	10	0
45	(9472)	Carved wood mask base; the eyes and tattoo marks on forehead are inlaid with dark hard wood, 14½ inches high	...	...	...	15	0	0
46	(9796)	Carved ivory mask base, with iron eyes, 9½ inches high	...	...	...	7	10	0
47	(9491)	Bronze mask base, with flange at bottom, ornamented with representations of stone adze heads, buffalo heads, &c., 9¾ inches high	...	...	...	25	0	0
48	(9740)	Bronze mask base, 12¼ inches high	...	...	...	25	0	0
49	(9809)	do. with conical head dress, 18½ inches high	...	...	...	35	0	0
50	(9765)	do. with flange at bottom, ornamented with representations of four leopards, frogs, buffalo heads, stone adze heads, &c., exceptionally large specimen, 21½ inches high	...	...	...	45	0	0
51	(9739)	Bronze mask, similar to last but without the leopards, 12¼ inches high	...	...	...	30	0	0
52	(9792)	Bronze serpent's head with ornamentation in relief, a fine example of Benin casting, 17¾ inches long, 12½ inches broad	...	...	...	30	0	0
53	(9751)	Bronze figure of a chief holding a wood staff in his right hand and a stone adze head in his left; this specimen is really part of a heavy bronze staff (see No. 3 in Cat. 21), 13 inches high	...	...	...	10	0	0
54	(9768)	Bronze cock, 15¾ inches high	...	...	...	30	0	0
55	(9487)	Bronze plaque representing three figures carrying food and drink, 17½ inches high, 13½ inches broad	...	...	...	40	0	0
56	(9489)	Bronze plaque representing three figures of warriors; two are wearing swords and the other is carrying a circular box, 16½ inches high, 14½ inches broad	...	...	...	40	0	0
57	(8985)	Bronze plaque representing two fish, 17¾ by 6½ inches	...	...	...	10	0	0
58	(9359)	Bronze plaque representing a warrior holding a sword in his right hand and a shield in the left, 16¼ inches high, 15¼ inches broad	...	...	...	20	0	0
59	(9364)	Bronze plaque representing a Portuguese, 16¾ inches high, 7½ inches broad	...	...	...	12	12	0
60	(9752)	Brass ceremonial wand with handle, ornamented with four figures, 29¼ inches long	...	...	...	5	0	0

## CATALOGUE No. 24.

								£	s.	d.
61	(9388)	Brass tongs with engraved ornamentation, 24 $\frac{1}{4}$ inches long	...	...	...	...	...	3	10	0
62	(9807)	Brass ceremonial staff with a bird on top, 12 $\frac{1}{2}$ inches long	..	...	...	...	...	4	10	0
63	(9379)	Executioner's sword with iron blade and brass and copper handle, 35 $\frac{1}{2}$ inches long	...	...	...	...	...	7	10	0
64	(9781)	Brass ceremonial staff with bird on top, 12 $\frac{1}{2}$ inches long	...	...	...	...	...	3	10	0
65	(9504)	Carved wood fetish staff ornamented with two masks, 11 inches long	...	...	...	...	...	1	0	0
66	(9502)	Bronze figure representing a Portuguese holding a flint-lock gun, probably the top of a wood staff, 5 $\frac{3}{4}$ inches high	...	...	...	...	...	5	0	0
67	(9380)	Brass ceremonial sword, 27 $\frac{1}{4}$ inches long	...	...	...	...	...	3	10	0
68	(8988)	Brass leopard with chain attached, used as a pendant, 4 by 2 $\frac{3}{4}$ inches	...	...	...	...	...	5	0	0
69	(9354)	Iron armband ornamented with four brass masks	...	...	..	...	...	1	5	0
70	(9761)	Fragment of a bronze plaque representing a bird, 6 $\frac{1}{2}$ by 3 $\frac{1}{4}$ inches	...	...	...	...	...	1	0	0
71	(9369)	Bronze pendant representing a figure on horseback, 5 by 6 $\frac{3}{4}$ inches	...	...	...	...	...	7	10	0
72	(9503)	Part of a figure pendant with a frog on the left side	...	...	...	...	...	2	0	0
73	(7597)	Bronze mount for war horn ornamented with a leopard and two crocodiles	1	15	0					
74	(9623)	Bronze nail, 15 $\frac{3}{4}$ inches long	...	...	...	...	...	0	15	0
75	(9381)	Sacrificial knife with iron blade and brass handle, 12 inches long	...	...	...	...	...	5	0	0
76	(9353)	Copper armband with brass mask	...	...	...	...	...	3	0	0
77	(9361)	Bronze plaque representing a Portuguese with a flint-lock gun, 11 $\frac{1}{4}$ inches high, 6 $\frac{3}{4}$ inches broad	...	...	...	...	...	7	10	0
78	(9470)	Bronze figure, 5 inches high	...	...	...	...	...	5	5	0
79	(9500)	Wrought-iron armband	...	...	...	...	...	0	7	6
80	(8786)	Bronze leopard, 3 $\frac{1}{4}$ by 5 $\frac{3}{4}$ inches	...	...	...	...	...	3	3	0
81	(9383)	Carved wood box partly covered with hammered brass, the lid representing two masks; this specimen is very similar in form to the Maori feather boxes, 22 $\frac{1}{2}$ by 7 $\frac{1}{2}$ by 6 $\frac{3}{4}$ inches	...	...	...	...	...	15	0	0
82	(8819)	Carved wood drum standing on two feet (one of which is lost) and covered with hide at each end, which is fastened with cane and wedges; the ornamentation represents a female figure, masks, birds, crocodiles, ring money, &c.	...	...	...	...	...	20	0	0
83	(9377)	Hammered brass oval box with ornamentation representing masks, leopards, &c., 21 by 9 $\frac{3}{4}$ by 7 $\frac{3}{4}$ inches	...	...	...	...	...	5	5	0
84	(9374)	Bronze vase ornamented with a cock on top (the head and neck is missing), 11 $\frac{3}{4}$ inches high, 6 $\frac{1}{4}$ inches diameter	...	...	...	...	...	4	0	0
85	(9384)	Carved wood mask base, 13 $\frac{3}{4}$ inches high	...	...	...	...	...	5	5	0
86	(9385)	Carved wood figure, 9 $\frac{1}{2}$ inches high	...	...	...	...	...	5	0	0
87	(9367)	Bronze figure holding a stone adze in his right hand and a cup in the left, 19 $\frac{3}{4}$ inches high	...	...	...	...	...	25	0	0
88	(9811)	Bronze bell in the form of a mask, one of the oldest examples of Benin work, 5 $\frac{1}{2}$ inches high, 3 $\frac{1}{4}$ inches diameter	...	...	...	...	...	5	0	0

## CATALOGUE No. 24.

			£	s.	d.
89	(8801)	Carved wood figure, 21½ inches high ... ..	5	0	0
90	(9415)	Bronze figure in the form of a fish and fingers in the form of tentacles, 13 inches high... ..	20	0	0
91	(9769)	Bronze plaque representing two chiefs, 20¾ inches high, 15 inches wide ...	30	0	0
92	(9478)	Heavy brass anklet worn by women ... ..	1	15	0
93	(9386)	Carved wood mirror frame with interlaced ornamentation round sides and a full length figure on top, 29¾ by 15½ inches ... ..	7	10	0
94	(9351)	Square brass pendant lamp with chain and hook attached, 5 inches square	5	5	0
95	(9793)	Carved wood box, the top ornamented with fish and the sides with leopards and snakes, 19¼ by 4½ by 2½ inches ... ..	3	0	0
96	(7609)	Bronze mask pendant with iron eyes 5¼ by 3½ inches ... ..	5	0	0
97	(8838)	Large carved ivory war horn, ornamented with representations of two crocodiles, a snake, and a mask, 53 inches long ... ..	40	0	0
98	(9790)	Carved ivory war horn, 7¾ inches long ... ..	1	5	0
99	(9788)	Carved ivory war horn, ornamented with representations of four snakes, 10¾ inches long ... ..	2	0	0
100	(9350)	Carved wood fetish staff ornamented with four figures, snakes, &c., 38½ inches long ... ..	10	0	0
101	(8834)	Carved ivory war horn, ornamented with representations of two crocodiles, two masks, and a snake, 21½ inches long ... ..	7	10	0
102	(9670)	Bronze mask pendant, 5¾ by 4½ inches ... ..	5	0	0
103	(9791)	Carved ivory fetish, with mask at top, 10½ inches long ... ..	1	5	0
104	(8839)	Large carved ivory war horn, 45½ inches long ... ..	25	0	0
105	(8828)	Carved ivory war horn, ornamented with representations of a crocodile and a mask, 16¾ inches long ... ..	3	10	0
106	(8861)	Carved ivory fetish, 16 inches long ... ..	4	4	0
107	(9808)	Carved wood box in the form of a mule's head, partly covered with hammered brass, 11 inches long, 8½ inches high ... ..	3	0	0







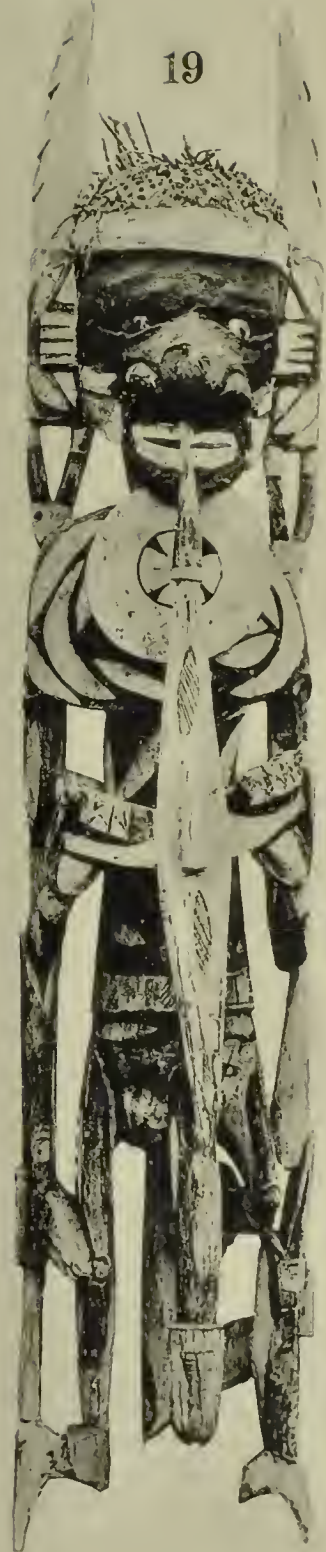
17



18



19



NEW IRELAND



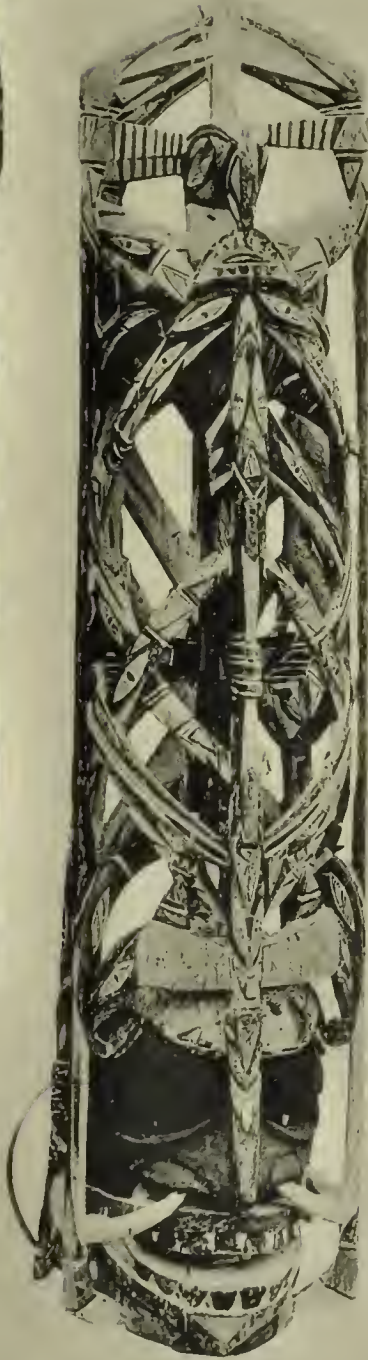


NEW IRELAND

20

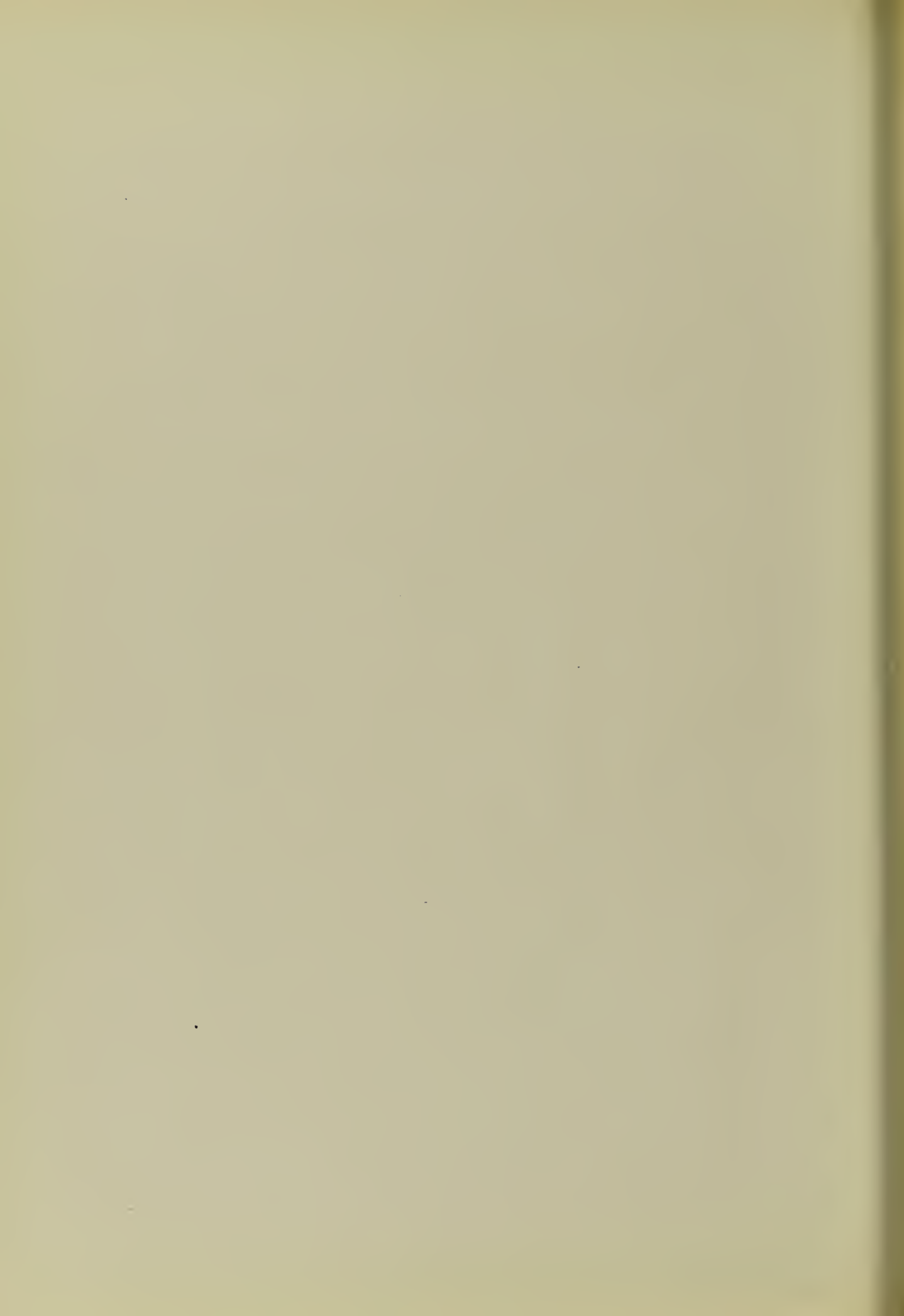


21



22







25



26



27





28



30



CEYLON

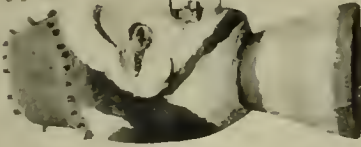


AFRICA

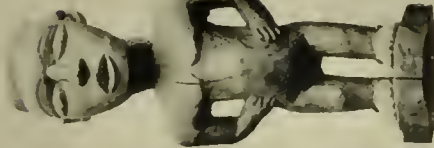
31



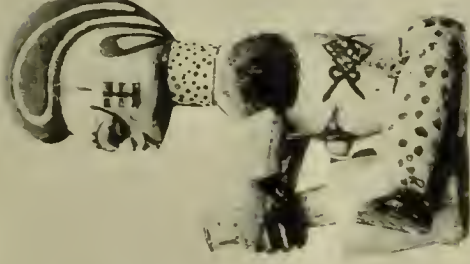
32



33



34



35



36



37



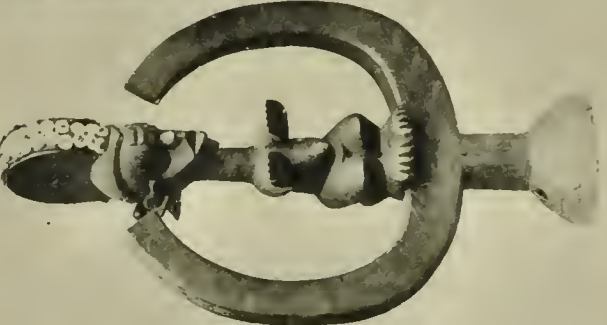
38



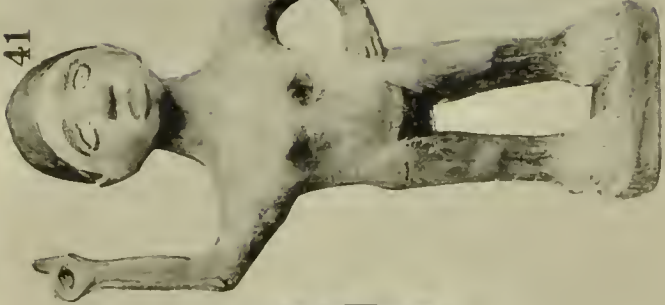
39



40



41



42







AFRICA

43



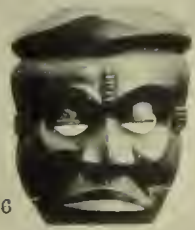
44



45



46



47



48







49



50



51



52



53



54



55



56



57



58



59



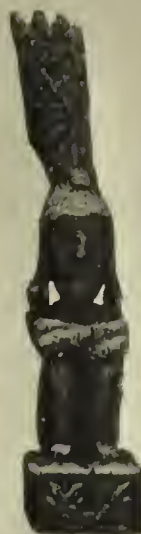
60



61



62



63



64





65



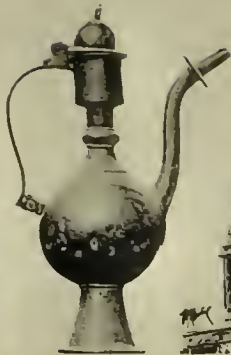
66



67



68



69



70



71



72



73



74



75





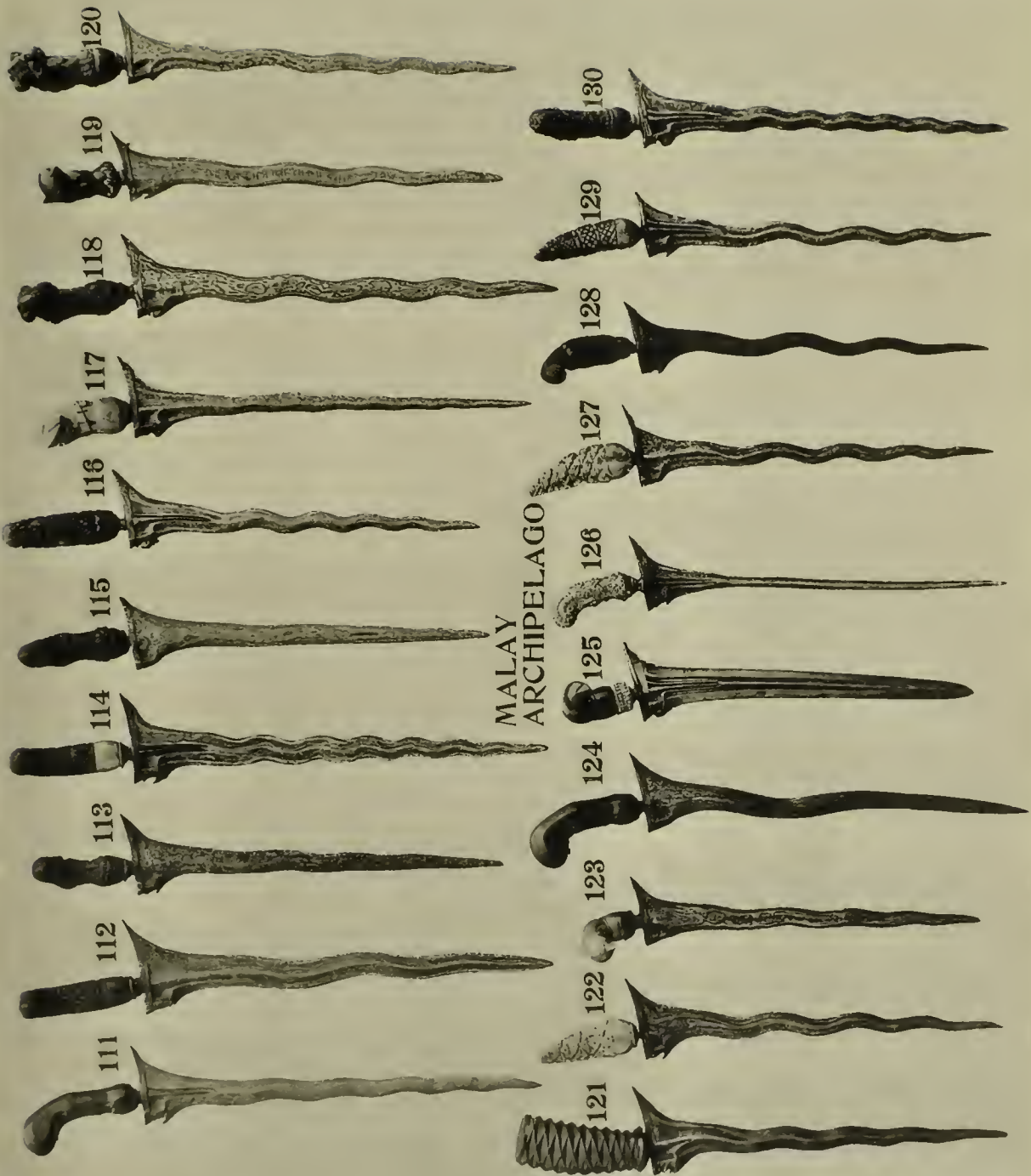
AFRICA













# CATALOGUE, No. 25,

PUBLISHED BY

W. D. WEBSTER, COLLECTOR OF ETHNOLOGICAL SPECIMENS,  
 OXFORD HOUSE, BICESTER, OXON, ENGLAND.



## NEW ZEALAND.

		£	s.	d.
1	(8986) Carved wood hand club with female figure on edge and a mask at end of handle, 17 $\frac{3}{4}$ inches long, 6 inches broad ... ..	7	10	0
2	(8947) Basalt mere or hand club, 15 $\frac{1}{4}$ inches long, 4 inches broad ... ..	3	10	0
3	(8987) Carved wood hand club, with female figure on edge and a mask at end of handle, 18 $\frac{1}{4}$ inches long, 7 inches broad ... ..	7	10	0.
4	(8526) Mere or hand club of very fine jade, 14 $\frac{1}{4}$ inches long, 4 inches broad	40	0	0
5	(8346) Fish-hook made with two pieces of bone fastened together with flax, 6 $\frac{1}{4}$ inches long ... ..	1	5	0
6	(8374) Carved wood hand club, inlaid with haliotis shell, 16 $\frac{1}{4}$ inches long ...	10	0	0
7	(7268) A very curious form of jade teki, 3 $\frac{3}{4}$ by 2 $\frac{1}{4}$ inches ... ..	3	0	0
8	(8328) Fish-hook of wood, with bone barb, 6 inches long ... ..	1	15	0
9	(8371) Carved wood figure canoe ornament, 7 $\frac{1}{4}$ inches high ... ..	2	10	0
10	(8148) Teki of fine jade, 8 by 3 inches ... ..	15	0	0
11	(8962) Large fish-hook made with two pieces of bone fastened with flax and carved; this specimen is very old and probably unique, 8 $\frac{3}{4}$ inches long ... ..	15	0	0
12	(8509) Adze, with jade head and carved wood haft, head 10 $\frac{3}{4}$ by 3 $\frac{3}{4}$ inches, haft 22 $\frac{1}{4}$ inches ... ..	40	0	0
13	(8949) Adze, with basalt head and carved wood haft, head 8 $\frac{1}{4}$ by 3 inches, haft 15 $\frac{1}{2}$ inches ... ..	15	0	0
14	(8948) Basalt mere, 14 $\frac{1}{2}$ inches long, 3 $\frac{3}{4}$ inches broad ... ..	3	10	0
15	(8372) Carved wood figure canoe ornament, 6 $\frac{3}{4}$ inches high ... ..	2	10	0
16	(8344) Fish-hook of haliotis shell, with iron barb, 4 inches long ... ..	1	0	0

## NEW IRELAND.

17	(9324) Elaborately carved wood idol with the tongue of same in the mouth of a shark, decorated in red, black, blue and white, 32 $\frac{1}{2}$ inches high ...	5	10	0
18	(9327) Elaborately carved wood mask, ornamented with birds, &c., above, decorated in red, black, blue and white, 34 inches high ... ..	7	10	0
19	(9331) Elaborately carved wood idol, decorated in red, black, blue and white, 33 $\frac{1}{2}$ inches high ... ..	5	5	0
20	(9333) Elaborately carved wood idol holding a bird, with another below having its head downwards, decorated in red, black and white, 49 inches high	7	10	0

# CATALOGUE No. 25.

			£	s.	d.
21	(9329)	Elaborately carved wood mask ornamented with birds, &c., above, decorated in red, black and white, 40 $\frac{3}{4}$ inches high ... ..	7	10	0
22	(9334)	Elaborately carved wood idol in the mouth of a fish, the tail of which holds the evil eye, decorated in blue, black and white, 44 inches high	5	10	0
23	(9337)	Elaborately carved wood bird holding in its beak a snake, decorated in red, black and white, 9 $\frac{1}{4}$ inches high, 30 $\frac{1}{2}$ inches wide ... ..	3	10	0
24	(9326)	Elaborately carved wood mask with a bird above, decorated in red, black and white, 22 inches high ... ..	3	10	0
25	(9343A)	Carved wood ornament in the form of an eye, 4 $\frac{1}{2}$ by 3 $\frac{1}{4}$ inches ...	0	7	6
26	(9325)	Elaborately carved wood mask in the form of a boar's head, decorated in red, black and white, 19 $\frac{1}{2}$ inches high ... ..	5	0	0
27	(9339)	Dancing mask made of cane, fibre and cloth, unusual type ... ..	4	4	0

## CEYLON.

28	(9725)	Wood carving from a temple, representing nine masks and a cobra, decorated in various colours, 41 inches high, 12 inches wide ... ..	5	0	0
29	(9724)	Carved wood figure standing on a mask; rising from his head are five cobras' heads and on his breast is a child; the dress is of lustre glass beads; on each side of mask is a child; from the back of each rises a cobra with its head protruding over the back of the figure, decorated in various colours, 44 inches high ... ..	5	0	0
30	(9726)	Wood carving similar to No. 28, 29 $\frac{1}{2}$ by 10 $\frac{1}{2}$ inches ... ..	3	0	0

## AFRICA.

31	(8840)	Carved wood fetish mask covered with skin, bone, teeth, and metal eyes, partly coloured black; at base is a canework flange, 11 inches high... (ASHANTEE)	3	3	0
32	(9346)	Carved wood mask decorated in red, black and white, 10 inches high (NIGER PROTECTORATE)	0	17	6
33	(8000)	Carved wood figure, 11 $\frac{3}{4}$ inches high ... ..(WEST COAST)	1	10	0
34	(8831)	Carved wood figure with movable joints, pounding corn, decorated in black and white, 13 inches high ... (NIGER PROTECTORATE)	1	15	0
35	(9345)	Carved wood figure, 11 inches high ... ..(WEST COAST)	1	10	0
36	(7980)	Carved wood double mask, with canework flange at base, partly coloured black, 12 inches high ... .. (NIGER PROTECTORATE)	2	2	0
37	(8829)	Carved wood ceremonial staff, ornamented with a double mask at top, 14 $\frac{3}{4}$ inches high ... .. (NIGER PROTECTORATE)	3	3	0
38	(9631)	Carved wood figure, 15 $\frac{1}{2}$ inches high ... ..	1	5	0
39	(9344)	Idol of wood and plaster in which is embedded several boar tusks, decorated in red and black, 17 $\frac{1}{2}$ inches high ... ..	5	0	0
40	(8864)	Carved wood figure standing in a crescent, partly coloured black, 15 $\frac{1}{2}$ inches high ... .. (NIGER PROTECTORATE)	2	2	0

# CATALOGUE No. 25.

			£	s.	d.
41	(7999)	Carved wood figure decorated in black and white, 16 $\frac{3}{4}$ inches high ... (WEST COAST)	1	10	0
42	(8001)	Carved wood figure, 13 inches high ... .. (WEST COAST)	1	10	0
43	(9636)	Large carved wood female figure wearing a grass dress, 57 inches high (ASHANTEE)	7	10	0
44	(8835)	Carved wood fetish ornamented with two masks coloured black, and a cane-work base, 30 $\frac{1}{2}$ inches high ... (NIGER PROTECTORATE)	3	10	0
45	(7974)	Large carved wood figure, 65 inches high ... .. (ASHANTEE)	3	0	0
46	(8821)	Carved wood mask, coloured black, 9 $\frac{3}{4}$ by 8 inches ... .. (NIGER PROTECTORATE)	1	15	0
47	(9480)	Carved wood figure wearing a cowrie shell necklet, decorated in red, black and white, 24 $\frac{1}{2}$ inches high ... .. (LOBO)	1	10	0
48	(8006)	Large carved wood drum covered with skin, which is fastened with cane and tightened with wood wedges, 48 inches high, 14 $\frac{1}{2}$ inches diameter (EQUATORIAL AFRICA)	5	0	0

## MISCELLANEOUS.

49	(7988)	Carved soapstone Buddha, 4 $\frac{3}{4}$ inches high ... .. (CHINA)	1	0	0
50	(9420)	Bronze Buddha, 5 $\frac{1}{2}$ inches high ... .. (INDIA)	0	10	0
51	(7986)	Carved wood Buddha decorated in gold and colours, 7 $\frac{1}{2}$ inches high (INDIA)	0	15	0
52	(7990)	Two carved wood figures, male and female, decorated in yellow and black, 5 inches high ... .. (WEST AFRICA)	1	5	0
53	(7987)	Carved white stone Buddha, 6 $\frac{1}{2}$ inches high ... .. (RANGOON)	0	10	0
54	(8968)	Carved wood figure decorated in gold and colours, 18 $\frac{3}{4}$ inches high (CHINA)	0	17	6
55	(7981)	Carved wood Buddha, partly gilt, 10 $\frac{1}{2}$ inches high ... (INDIA)	0	15	0
56	(7985)	do. 8 do. ... (INDIA)	0	15	0
57	(7989)	do. 9 $\frac{1}{4}$ do. ... (INDIA)	0	15	0
58	(8967)	Carved wood figure decorated in gold and colours, 8 inches high (CHINA)	0	17	6
59	(9419)	Gilt bronze Buddha on stand, 7 $\frac{3}{4}$ inches high .. .. (INDIA)	0	17	6
60	(5485)	Carved wood Buddha, partly gilt, 16 $\frac{1}{4}$ inches high ... (BURMAH)	1	5	0
61	(8961)	Carved wood figure decorated in gold and colours, 13 $\frac{1}{2}$ inches high (CHINA)	1	0	0
62	(8966)	Carved wood figure decorated in gold and colours, 13 inches high (CHINA)	1	5	0
63	(6675)	Carved wood idol, 13 inches high... .. (LETI)	1	10	0
64	(5482)	Carved stone idol, 13 $\frac{3}{4}$ inches high ... .. (INDIA)	1	10	0
65	(7983)	Carved white stone Buddha, 9 inches high ... .. (RANGOON)	0	10	0
66	(7991)	Carved white stone reclining Buddha, on a carved wood stand, 9 $\frac{1}{2}$ inches high, 29 $\frac{1}{2}$ inches long ... .. (RANGOON)	5	0	0

## CATALOGUE No. 25.

			£	s.	d.
67	(7984)	Carved white stone Buddha, 12½ inches high ... .. (RANGOON)	0	15	0
68	(9529)	Elaborately carved stone idol taken from the Temple of Halabeide, 13¾ inches high ... .. (SOUTHERN INDIA)	3	3	0
69	(8646)	Brass coffee pot, 14 inches high ... .. (ABYSSINIA)	1	0	0
70	(8651)	Bishop's crown of gilt brass set with various pieces of coloured glass and ornamented with small bells, 14 inches high. This specimen and Nos. 69 and 71 were brought home by the Rev. E. Goodhart, who was chaplain of the forces in the Abyssinian War ... (ABYSSINIA)	5	0	0
71	(8647)	Brass coffee pot, 10¾ inches high... .. (ABYSSINIA)	1	0	0
72	(9530)	Elaborately carved stone idol taken from the Temple of Halabeide, 15½ inches high ... .. (SOUTHERN INDIA)	5	5	0
73	(8843)	Gilt bronze Buddha, 23¼ inches high ... .. (INDIA)	6	10	0
74	(7993)	Carved wood Buddha, 30 inches high ... .. (BURMAH)	4	4	0
75	(7994)	Carved white stone Buddha, 25 inches high ... .. (RANGOON)	2	2	0

### AFRICA.

76	(8326)	Sword with wood handle and engraved steel blade, full length 23¼ inches, blade 16½ by 4¾ inches... .. (CENTRAL AFRICA)	0	15	0
77	(8823)	Carved wood mask decorated in black and white, 5¾ by 4¾ inches ... (NIGER PROTECTORATE)	1	5	0
78	(6578)	Horn snuff bottle, 4¼ inches high ... .. (KAFFIR)	0	7	6
79	(8565)	Cross-bow of wood, 46 by 14¼ inches ... .. (FAN COUNTRY)	1	5	0
80	(7181)	Wood pillow, 16 inches long, 4 inches high ... .. (NYAM-NYAM)	0	12	6
81	(8176)	Wood pipe with the bowl lined with metal ... .. (KAFFIR)	0	7	6
82	(5724)	Carved wood staff ornamented with a figure, 19 inches long ... ..	1	0	0
83	(8312)	Assegai with engraved steel head, full length 63 inches, head 10¼ inches (GABOON RIVER)	0	10	0
84	(9762)	Steel tongs finely engraved, used for picking embers out of the fire for lighting pipes, 15¼ inches long ... .. (NYAM-NYAM)	0	15	0
85	(7284)	Quiver of bark containing cross-bow darts made of wood and feathered with leaves, 13½ by 4 inches ... .. (BENIN)	0	5	0
86	(6733)	Pipe with wood stem covered with copper wire and iron bowl, 10¾ inches long ... .. (CONGO)	0	15	0
87	(6329)	Sword with broad two-edged blade and brass handle, sheath of leather with engraved metal mounts, full length 38 inches ... (SOUDAN)	2	2	0
88	(9763)	Horn spoon ornamented with iron rings, 9½ inches long (NYAM-NYAM)	0	10	0
89	(8903)	Assegai with engraved iron head, full length 64½ inches, head 13½ inches ... ..	0	10	0
90	(8327)	Sword with steel blade and ivory handle, full length 21¾ inches, blade 17½ by 3½ inches ... .. (CONGO)	1	10	0
91	(8325)	Sword with engraved steel blade and wood handle bound with copper, full length 22½ inches, blade 17 by 2½ inches ... .. (CONGO)	0	17	6



## CATALOGUE No. 25.

			£	s.	d.
92	(8177)	Wood pipe, 10 $\frac{3}{4}$ inches long ... .. (KAFFIR)	0	4	0
93	(8607)	Wood spoon with burnt decoration, 12 $\frac{3}{4}$ inches long (OLD CALABAR)	0	2	0
94	(8429)	Battle axe with iron head and wood haft, 30 $\frac{3}{4}$ inches long (BASUTOS)	0	10	0
95	(8495)	Sword with wood handle and steel blade, sheath of hide decorated in black, full length 21 $\frac{3}{4}$ inches, blade 17 by 1 $\frac{3}{4}$ inches ... (ANGOLA)	0	15	0

### TAHITI.

96	(8528)	Adze with stone head and wood haft, head 4 $\frac{3}{4}$ by 1 $\frac{1}{4}$ inches ... ..	3	10	0
97	(8530)	do. do. 9 $\frac{1}{2}$ by 2 $\frac{1}{2}$ inches ... ..	4	10	0

### MANGAIA.

98	(9427)	Ceremonial adze with stone head and finely carved wood haft, head 7 by 2 $\frac{3}{4}$ inches, full length 20 $\frac{1}{2}$ inches ... ..	5	10	0
99	(9349)	Ceremonial adze with stone head and finely carved wood haft, head 6 $\frac{3}{4}$ by 2 $\frac{1}{4}$ inches, full length 24 $\frac{1}{2}$ inches ... ..	5	10	0
100	(9426)	Ceremonial adze with stone head and finely carved wood haft, head 6 by 2 inches, full length 28 $\frac{1}{4}$ inches ... ..	5	10	0

### MARQUISAS.

101	(8474)	Waist band composed of thirty-three white shells bound to a strip of bark with sinnet... ..	2	10	0
-----	--------	---	---	----	---

### GREENLAND.

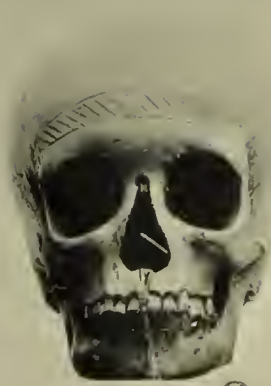
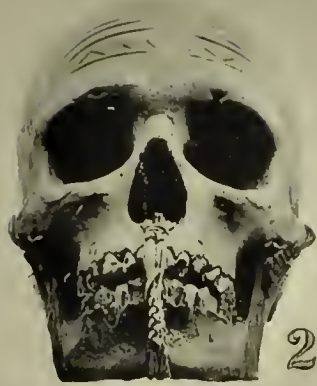
102	(8534)	Snow spectacles made of wood ... ..	0	12	6
103	(8501)	Spear head made of two pieces of bone, 16 $\frac{1}{2}$ inches long ... ..	1	0	0
104	(9418)	Bone spear head tipped with copper, 6 $\frac{3}{4}$ inches long ... ..	0	12	6
105	(8507)	Barbed and grooved bone spear head; this specimen was tipped with slate or stone which is missing, 14 inches long .. ...	0	15	0
106	(9417)	Knife with copper blade and horn handle, 7 $\frac{1}{4}$ by 4 $\frac{3}{4}$ inches ... ..	2	10	0
107	(8724)	Arrow with bone head and drift wood shaft feathered at end, head 6 $\frac{1}{2}$ inches, length 30 $\frac{3}{4}$ inches ... ..	0	5	0
108	(8722)	Arrow with bone head and drift wood shaft feathered at end, head 5 $\frac{1}{4}$ inches, length 27 inches ... ..	0	5	0
109	(8764)	Arrow with bone head and drift wood shaft feathered at end, head 5 inches, length 28 inches ... ..	0	5	0
110	(8765)	Arrow with bone head and drift wood shaft feathered at end, head 6 inches, length 30 $\frac{1}{4}$ inches ... ..	0	5	0

### MALAY ARCHIPELAGO.

111	(1000)	Kris with carved wood handle and waved steel blade, full length 18 $\frac{1}{4}$ inches ... ..	0	15	0
112	(8886)	Kris with carved wood handle and waved steel blade, full length 19 inches... ..	0	15	0

# CATALOGUE No. 25.

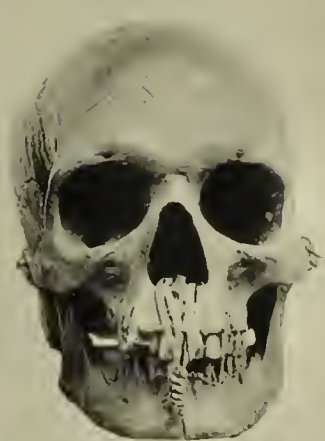
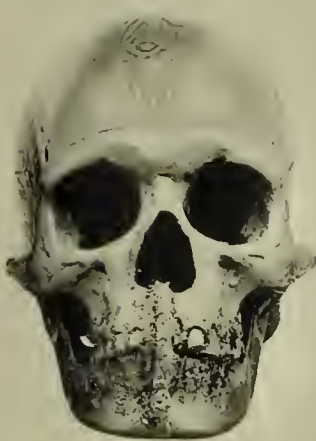
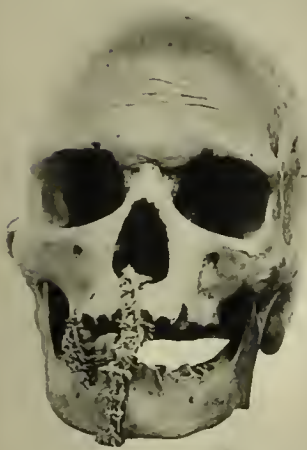
			£	s.	d.
113	(8875)	Kris with carved wood handle and waved steel blade, full length 16 inches ... ..	0	15	0
114	(8865)	Kris with carved wood handle and waved steel blade, full length 19 inches... ..	1	0	0
115	(8882)	Kris with carved wood handle and straight steel blade, full length 16 $\frac{3}{4}$ inches ... ..	1	0	0
116	(8869)	Kris with carved wood handle and waved steel blade, full length 17 inches... ..	1	0	0
117	(8887)	Kris with carved ivory handle and waved steel blade, full length 17 $\frac{3}{4}$ inches... ..	1	0	0
118	(8876)	Kris with carved wood handle and waved steel blade, full length 19 inches .. ...	1	0	0
119	(8885)	Kris with carved wood handle and waved steel blade, full length 16 $\frac{1}{4}$ inches... ..	0	10	0
120	(8888)	Kris with carved wood handle and waved steel blade, full length 17 $\frac{3}{4}$ inches... ..	1	0	0
121	(218X)	Kris with carved wood handle and waved steel blade, wood sheath, full length 17 $\frac{3}{4}$ inches ... ..	0	12	6
122	(8913)	Kris with carved bone handle and waved steel blade, full length 17 inches .. ...	0	10	0
123	(7123)	Kris with carved ivory handle and waved steel blade, full length 14 $\frac{3}{4}$ inches ... ..	0	17	6
124	(221X)	Kris with carved wood handle and waved steel blade, full length 18 inches ... ..	0	12	6
125	(5808)	Kris with ebony handle and silver mount, straight steel blade, sheath of wood covered with silver, full length 15 inches ... ..	1	10	0
126	(500X)	Kris with gilt silver handle, jewelled with jargoons and rubies, narrow straight steel blade, sheath of wood covered with silver, full length, 16 $\frac{1}{2}$ inches ... ..	5	10	0
127	(8870)	Kris with carved wood handle and waved steel blade, full length 17 inches ... ..	0	10	0
128	(8883)	Kris with carved wood handle and waved steel blade, full length 6 $\frac{1}{4}$ inches ... ..	0	10	0
129	(8878)	Kris with carved bone handle and waved steel blade, full length 16 $\frac{3}{4}$ inches... ..	0	10	0



1 NEW GUINEA

2

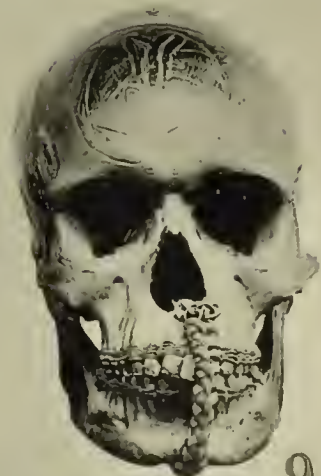
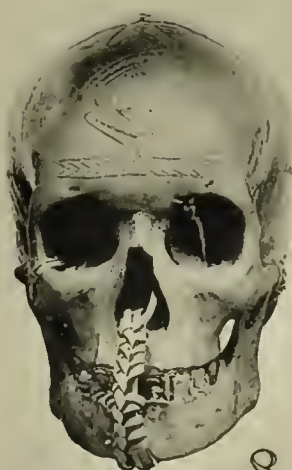
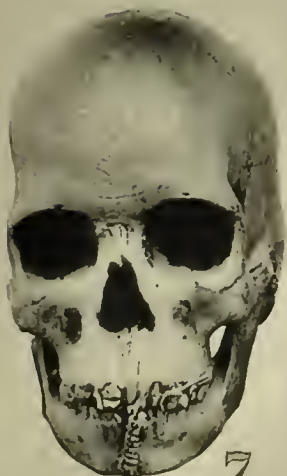
3



4

5

6

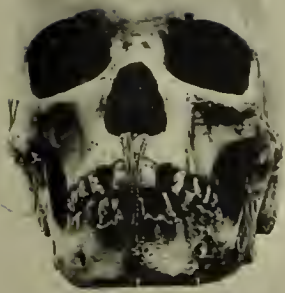


7

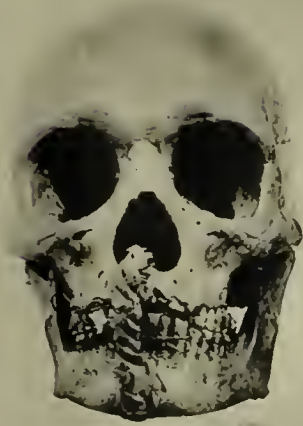
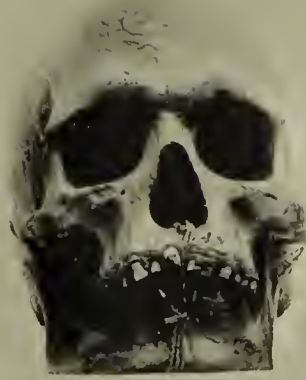
8

9





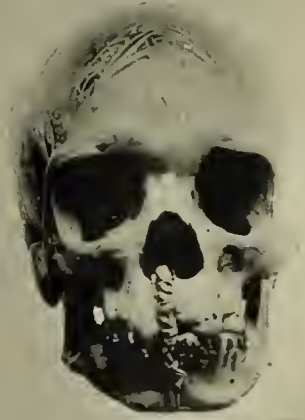
10 NEW GUINEA



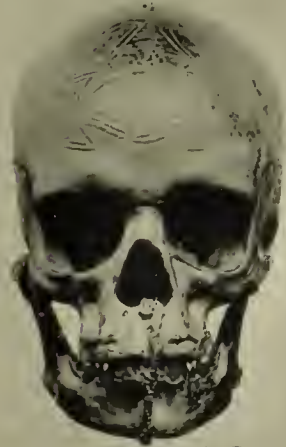
13



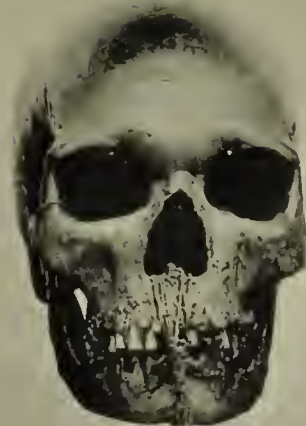
14



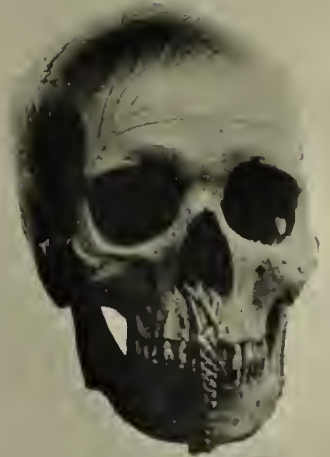
15



16

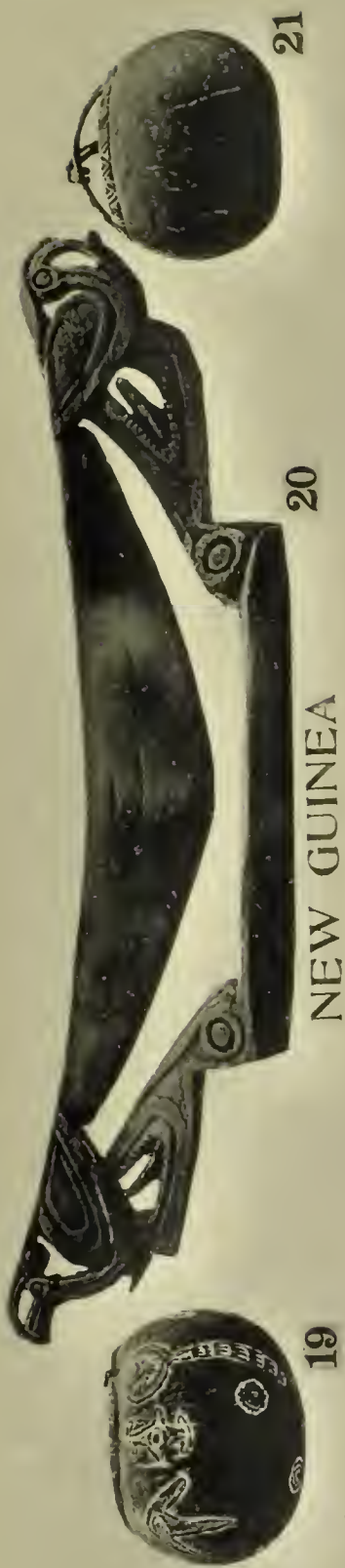


17



18





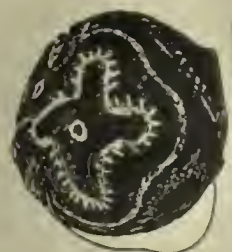
NEW GUINEA



19



21



22



23



24



25



26



27



28



29



30



31





NEW GUINEA



32



34



35



38



36





37

38

NEW GUINEA

40

41

39

42

43

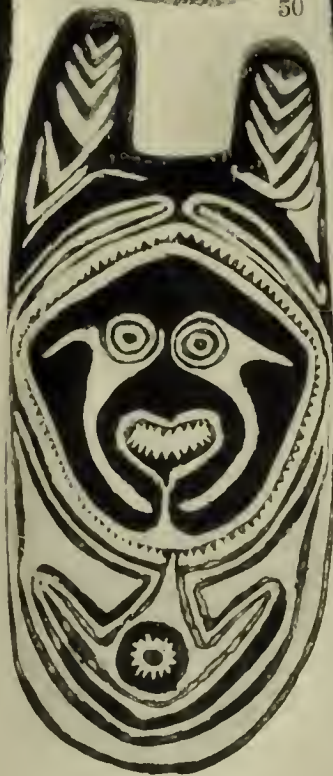
44

45

46



NEW GUINEA

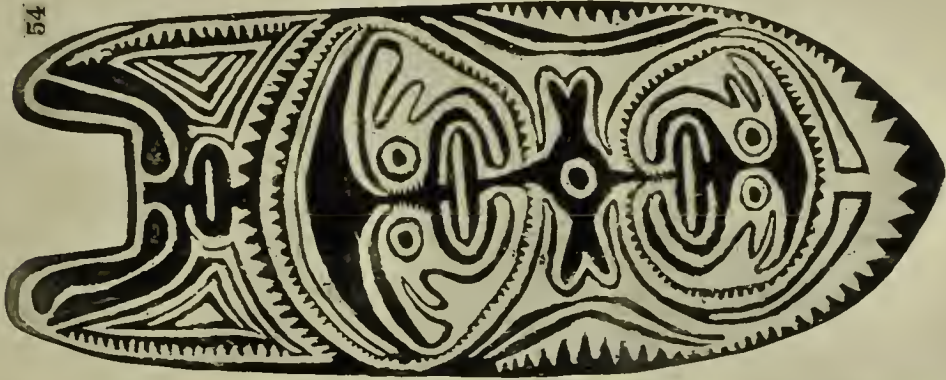




55



54



53



NEW GUINEA

52



51





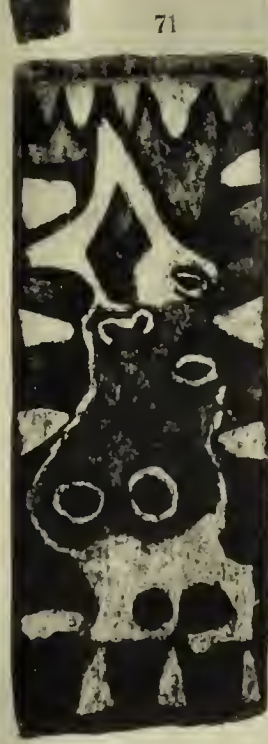
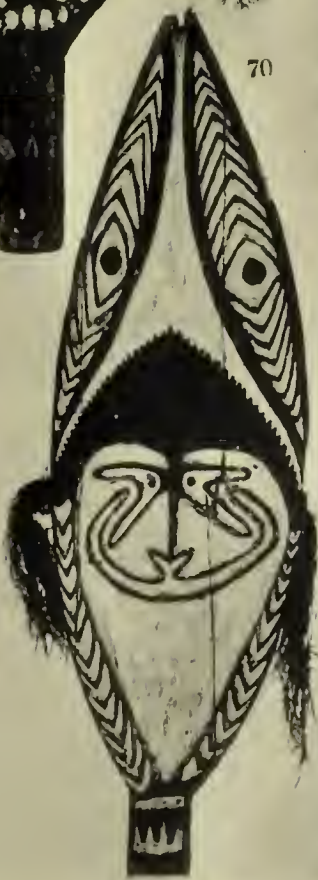
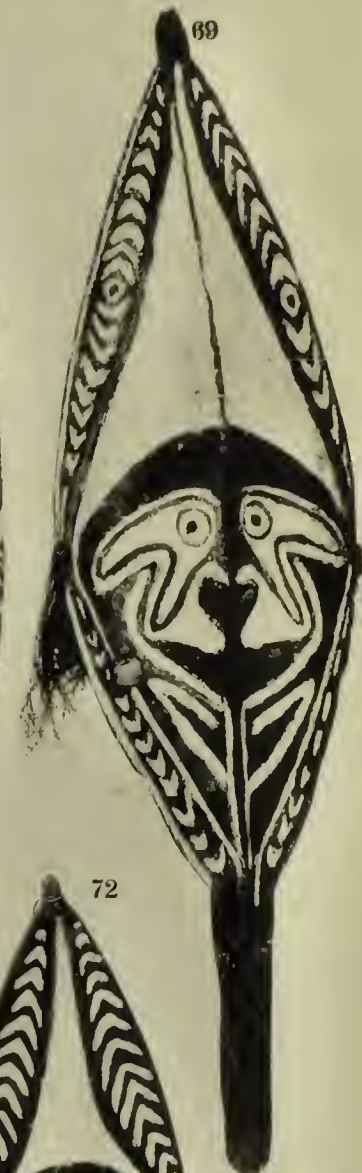
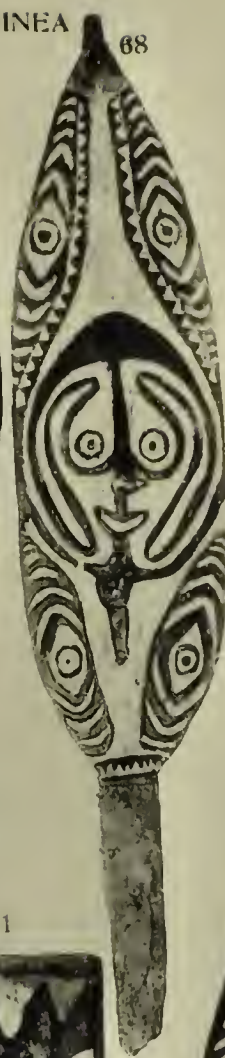


NEW GUINEA





NEW GUINEA





NEW GUINEA



73



74



75



76



77



78



79



80



81



82



83



84



NEW GUINEA







NEW GUINEA



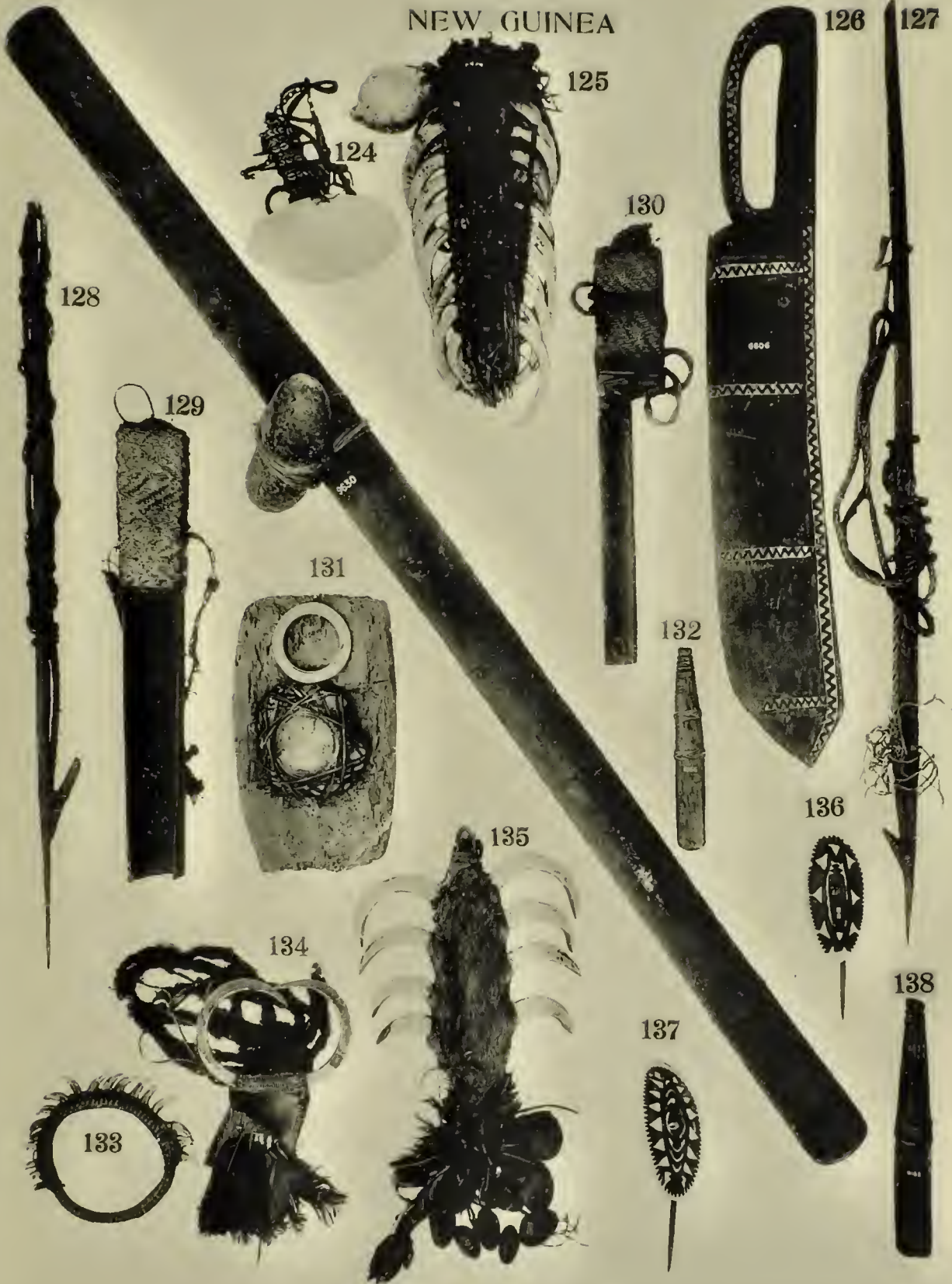


NEW GUINEA





NEW GUINEA





NEW GUINEA









NEW GUINEA





# NEW GUINEA





NEW GUINEA



187

188

189

190

191

192

193





194



195



196



197

NEW GUINEA



198



199





NEW GUINEA



200



201

202



203

204





# CATALOGUE No. 26,

PUBLISHED BY

W. D. WEBSTER, COLLECTOR OF ETHNOGRAPHICAL SPECIMENS,  
 OXFORD HOUSE, BICESTER, OXON, ENGLAND.



## NEW GUINEA.

					£	s.	d.
1	(9065)	Human skull with carved frontal, native name	Kopuku, tribe Kaimari	(ROMILLY SOUND)	2	0	0
2	(7502)	do.	do.	do.	(FLY RIVER)	2	10 0
3	(7524)	do.	do.	do.	(FLY RIVER)	1	15 0
4	(7163)	do.	do.	do.	(FLY RIVER)	2	10 0
5	(7495)	do.	do.	do.	(FLY RIVER)	2	10 0
6	(7485)	do.	do.	do.	(FLY RIVER)	2	10 0
7	(7169)	do.	do.	do.	(FLY RIVER)	2	10 0
8	(7487)	do.	do.	do.	(FLY RIVER)	2	10 0
9	(7166)	do.	do.	do.	(FLY RIVER)	2	10 0
10	(9067)	Human skull with carved frontal, native name	Kopuku, tribe Kaimari	(ROMILLY SOUND)	2	0	0
11	(7503)	do.	do.	do.	(FLY RIVER)	2	15 0
12	(7521)	do.	do.	do.	(FLY RIVER)	2	10 0
13	(7153)	do.	do.	do.	(FLY RIVER)	3	3 0
14	(7149)	do.	do.	do.	(FLY RIVER)	2	10 0
15	(7165)	do.	do.	do.	(FLY RIVER)	2	10 0
16	(7164)	do.	do.	do.	(FLY RIVER)	2	15 0
17	(7499)	do.	do.	do.	(FLY RIVER)	2	0 0
18	(7517)	do.	do.	do.	(FLY RIVER)	2	10 0
19	(9185)	Carved cocoanut water vessel, decorated in red, black, and white...	...	...	...	0	12 6
20	(7180)	Carved wood head rest, 26¼ inches long	...	...	...	1	0 0
21	(6182)	Carved cocoanut water vessel	...	...	...	(VEBURI)	0 7 6
22	(9062)	Carved cocoanut water vessel, decorated in red and white	(PURARI DELTA)				0 10 6
23	(9188)	do.	do.	do.	(PURARI DELTA)		0 7 6
24	(9187)	do.	decorated white	...	(PURARI DELTA)		0 7 6
25	(9186)	do.	do.	...	(PURARI DELTA)		0 10 0
26	(6134)	do.	do.	...	...	(MAIVA)	0 10 0

## CATALOGUE, No. 26.

			£	s.	d.
27	(416)	Gourd lime bottle with burnt decoration . . . (LOUISIADE ISLANDS)	0	7	6
28	(9228)	Carved wood head, decorated in red, black, and white, native name Kopuku, tribe Maipua . . . . . (PURARI DELTA)	1	15	0
29	(418)	Gourd lime bottle with burnt decoration . . . (LOUISIADE ISLANDS)	0	7	6
30	(9320)	Boar's skull, decorated with grass and feathers, native name Auri, tribe Maipua . . . . . (PURARI DELTA)	1	10	0
31	(417)	Gourd lime bottle with burnt decoration . . . (LOUISIADE ISLANDS)	0	7	6
32	(9214)	Carved wood ceremonial tablet, decorated in red, black, and white, 36½ inches long, 7¾ inches broad, native name Koha, tribe Maipua . . . (PURARI DELTA)	1	5	0
33	(6981)	Carved wood shield, native name Koha, tribe Arrop, decorated red, black and white, 53 inches long, 21 inches broad . . . (BERLINHAFEN)	2	10	0
34	(9218)	Carved wood ceremonial tablet, decorated in red, black, and white, 38½ inches long, 9 inches broad, native name Koha, tribe Maipua . . . (PURARI DELTA)	1	0	0
35	(9213)	Carved wood ceremonial tablet, decorated in red, black, and white, 27 inches long, 5½ inches broad, native name Koha, tribe Jare . . . . . (PURARI DELTA)	1	0	0
36	(9268)	Carved wood ceremonial tablet, decorated in red, black, and white, 27 inches long, 5¾ inches broad, native name Koha, tribe Jare . . . . . (PURARI DELTA)	1	0	0
37	(9219)	Carved wood ceremonial tablet, decorated in red, black, and white, 34½ inches long, 10½ inches broad, native name Koha, tribe Maipua . . . (PURARI DELTA)	1	10	0
38	(9223)	Carved wood ceremonial tablet, decorated in red, black, and white, 35¼ inches long, 9 inches broad, native name Koha, tribe Jare . . . . . (PURARI DELTA)	1	5	0
39	(9063)	Carved wood ceremonial tablet, decorated in red, black, and white, 26 inches long, 5 inches broad, native name Koha, tribe Maipua . . . . . (PURARI DELTA)	0	15	0
40	(9220)	Carved wood ceremonial tablet, decorated in red, black, and white, 40 inches long, 9½ inches broad, native name Koha, tribe Maipua . . . . . (PURARI DELTA)	1	10	0
41	(9221)	Carved wood ceremonial tablet, decorated in red, black, and white, 35¼ inches long, 10¼ inches broad, native name Koha, tribe Maipua . . . . . (PURARI DELTA)	1	5	0
42	(9262)	Carved wood shield, decorated in red, black, and white, 29 inches long, 10½ inches broad, native name Koha, tribe Maipua . . . (PURARI DELTA)	1	5	0
43	(9617)	Carved wood shield, decorated in red, black, and white, 26½ inches long, 8½ inches broad, native name Koha, tribe Jare . . . (PURARI DELTA)	0	15	0
44	(9072)	Carved wood forehead ornament, decorated red and white, 8 inches long, 5¼ inches broad, native name Behenew, tribe Maipua . . . (PURARI DELTA)	0	7	6
45	(9264)	Carved wood shield, decorated in red, black, and white, 22¾ inches long, 10½ inches broad, native name Korepaka, tribe Maipua . . . . . (PURARI DELTA)	1	0	0

## CATALOGUE No. 26.

			£	s.	d.
46	(9259)	Carved wood shield, decorated in red, black, and white, 28 inches long, 10 $\frac{3}{4}$ inches broad, native name Korepaka, tribe Maipua... .. (PURARI DELTA)	1	5	0
47	(9208)	Carved wood ceremonial tablet, decorated in red, black, and white, 55 $\frac{1}{2}$ inches long, 14 $\frac{3}{4}$ inches broad, native name Koha, tribe Koriki... .. (PURARI DELTA)	3	3	0
48	(9260)	Carved wood shield, decorated in red, black, and white, 32 inches long, 10 $\frac{1}{4}$ inches broad, native name Korepaka, tribe Maipua... .. (PURARI DELTA)	1	10	0
49	(9211)	Carved wood ceremonial tablet, decorated in red, black, and white, 55 $\frac{1}{2}$ inches long, 13 $\frac{3}{4}$ inches broad, native name Koha, tribe Koriki... .. (PURARI DELTA)	3	3	0
50	(9261)	Carved wood shield, decorated in red, black, and white, 29 $\frac{1}{4}$ inches long, 13 inches broad, native name Korepaka, tribe Maipua (PURARI DELTA)	1	10	0
51	(9217)	Carved wood ceremonial tablet, decorated in red, black, and white, 46 $\frac{1}{4}$ inches long, 12 $\frac{1}{4}$ inches broad, native name Koha, tribe Maipua... .. (PURARI DELTA)	2	0	0
52	(9263)	Carved wood shield, decorated in red, black, and white, 37 inches long, 6 $\frac{1}{2}$ inches broad, native name Korepaka, tribe Maipua (PURARI DELTA)	1	10	0
53	(9266)	Carved wood ceremonial tablet, decorated in red, black, and white, 40 $\frac{3}{4}$ inches long, 6 $\frac{1}{2}$ inches broad, native name Koha, tribe Jara... .. (PURARI DELTA)	1	5	0
54	(9265)	Carved wood shield, decorated in red, black, and white, 36 $\frac{1}{2}$ inches long, 14 $\frac{1}{4}$ inches broad, native name Korepaka, tribe Maipua (PURARI DELTA)	1	15	0
55	(9212)	Carved wood ceremonial tablet, decorated in red, black, and white, 43 inches long, 12 $\frac{1}{2}$ inches broad, native name Koha, tribe Jare... .. (PURARI DELTA)	2	0	0
56	(9209)	Carved wood ceremonial tablet, decorated in red, black, and white, 40 $\frac{1}{2}$ inches long, 14 $\frac{3}{4}$ inches broad, native name Koha, tribe Koriki... .. (PURARI DELTA)	1	5	0
57	(9225)	Carved wood ceremonial tablet, decorated in red, black, and white, 31 inches long, 7 $\frac{1}{2}$ inches broad, native name Koha, tribe Maipua... .. (PURARI DELTA)	1	5	0
58	(9226)	Carved wood ceremonial tablet, decorated in red, black, and white, 33 $\frac{3}{4}$ inches long, 9 $\frac{1}{2}$ inches broad, native name Koha, tribe Maipua... .. (PURARI DELTA)	1	0	0
59	(9222)	Carved wood ceremonial tablet, decorated in red, black, and white, 43 inches long, 14 inches broad, native name Koha, tribe Maipua... .. (PURARI DELTA)	1	0	0
60	(9073)	Carved wood forehead ornament, decorated in white and red, 14 $\frac{1}{4}$ by 9 inches, native name Behenew, tribe Maipua... .. (PURARI DELTA)	0	15	0
61	(8992)	Carved wood ceremonial tablet, decorated in red, black, and white, 33 $\frac{3}{4}$ inches high, 8 $\frac{1}{4}$ inches broad, native name Koha, tribe Maipua... .. (PURARI DELTA)	1	10	0
62	(8993)	Carved wood shield, decorated in red, black, and white, 29 $\frac{1}{2}$ inches long, 8 $\frac{3}{4}$ inches broad, native name Korepaka, tribe Maipua (PURARI DELTA)	1	0	0

## CATALOGUE No. 26.

			£	s.	d.
63	(8994)	Carved wood ceremonial tablet, decorated in red, black, and white, 26½ inches long, 10 inches broad, native name Koha, tribe Maipua ... (PURARI DELTA)	1	5	0
64	(9074)	Carved wood forehead ornament, decorated in red and white, 11½ by 6¼ inches, native name Behenew, tribe Maipua ... (PURARI DELTA)	0	10	0
65	(9075)	Carved wood forehead ornament, with feathers at edge, decorated in red and white, 11½ by 7½ inches, native name Behenew, tribe Maipua ... (PURARI DELTA)	1	0	0
66	(9224)	Carved wood ceremonial tablet, decorated in red, black, and white, 38½ inches long, 14 inches broad, native name Koha, tribe Maipua ... (PURARI DELTA)	1	0	0
67	(9270)	Carved wood ceremonial tablet, decorated in red, black, and white, 34½ inches long, 10¼ inches broad, native name Koha, tribe Jare ... (PURARI DELTA)	1	0	0
68	(9267)	Carved wood ceremonial tablet, decorated in red, black, and white, 39½ inches long, 8½ inches broad, native name Koha, tribe Maipua ... (PURARI DELTA)	1	10	0
69	(9210)	Carved wood ceremonial tablet, decorated in red, black, and white, 43½ inches long, 11½ inches broad, native name Koha, tribe Maipua ... (PURARI DELTA)	1	15	0
70	(9215)	Carved wood ceremonial tablet, decorated in red, black, and white, 42 inches long, 9¾ inches broad, native name Koha, tribe Maipua ... (PURARI DELTA)	0	15	0
71	(9618)	Carved wood shield, decorated in red, black, and white, 34¾ inches long, 10 inches broad, native name Korepaka, tribe Maipua (PURARI DELTA)	0	15	0
72	(9269)	Carved wood ceremonial tablet, decorated in red, black, and white, 37 inches long, 9 inches broad, native name Koha, tribe Maipua ... (PURARI DELTA)	1	5	0
73	(8995)	Carved bark belt, decorated in red and white, 4½ inches broad, native name Ore, tribe Maipua ... (PURARI DELTA)	0	17	6
74	(9011)	Carved bark belt, decorated in red and white, 5 inches broad, native name Ore, tribe Jare ... (PURARI DELTA)	0	17	6
75	(9113)	Carved bark belt, decorated in red and white, 4¼ inches broad, native name Ore, tribe Eoarva ... (PURARI DELTA)	0	17	6
76	(9115)	Carved bark belt, decorated in red and white, 4½ inches broad, native name Ore, tribe Maipua ... (PURARI DELTA)	0	17	6
77	(9042)	Carved bark belt, decorated in red and white, 4 inches broad, native name Ore, tribe Orikinuru... (PURARI DELTA)	0	15	0
78	(9139)	Carved bark belt, decorated in red and white, 7½ inches broad, native name Ore, tribe Eoarva ... (WAM RIVER)	1	5	0
79	(9110)	Carved bark belt, decorated in red and white, 5 inches broad, native name Ore, tribe Maipua ... (PURARI DELTA)	0	17	6
80	(9045)	Carved bark belt, decorated in red and white, 5½ inches broad, native name Ore, tribe Orikinuru ... (PURARI DELTA)	1	5	0

# CATALOGUE No. 26.

£ s. d.

81	(9107)	Carved bark belt, decorated in red and white, 5 $\frac{3}{4}$ inches broad, native name Ore, tribe Eoarva ... .. (PURARI DELTA)	0	17	6
82	(9111)	Carved bark belt, decorated in red and white, 3 $\frac{3}{4}$ inches broad, native name Ore, tribe Mouro ... .. (PURARI DELTA)	0	15	0
83	(9046)	Carved bark belt, decorated in red and white, 6 $\frac{1}{2}$ inches broad, native name Ore, tribe Kaimaro ... .. (PURARI DELTA)	1	5	0
84	(8996)	Carved bark belt, decorated in red and white, 4 $\frac{1}{2}$ inches broad, native name Ore, tribe Jare ... .. (PURARI DELTA)	0	17	6
85	(9076)	Carved wood club, decorated in red, black, and white, 49 inches long, native name Aviya, tribes Maipua and Jare ... (PURARI DELTA)	1	15	0
86	(9085)	Carved wood club, decorated in red, black, and white, 13 inches long, native name Aviya, tribes Maipua and Jare ... (PURARI DELTA)	1	5	0
87	(9007)	Carved wood club, decorated in red, black, and white, 34 inches long, native name Aviya, tribes Maipua and Jare ... (PURARI DELTA)	2	0	0
88	(9077)	Carved wood club, decorated in red, black, and white, 29 inches long, native name Aviya, tribes Maipua and Jare ... (PURARI DELTA)	2	2	0
89	(9247)	Carved wood club, decorated in red, black, and white, 44 inches long, native name Aviya, tribes Maipua and Jare ... (PURARI DELTA)	2	0	0
90	(9256)	Carved wood club, decorated in red, black, and white, 21 inches long, native name Aviya, tribes Maipua and Jare ... (PURARI DELTA)	0	17	6
91	(9238)	Carved wood club, decorated in red, black, and white, 39 $\frac{1}{4}$ inches long, native name Aviya, tribes Maipua and Jare ... (PURARI DELTA)	1	5	0
92	(9078)	Carved wood club, decorated in red, black, and white, 27 inches long, native name Aviya, tribes Maipua and Jare ... (PURARI DELTA)	1	15	0
93	(9100)	Carved wood club, decorated in red, black, and white, 21 $\frac{1}{2}$ inches long, native name Aviya, tribes Maipua and Jare ... (PURARI DELTA)	0	17	6
94	(9252)	Carved wood club, decorated in red, black, and white, 25 $\frac{3}{4}$ inches long, native name Aviya, tribes Maipua and Jare ... (PURARI DELTA)	1	0	0
95	(9089)	Carved wood club, decorated in red, black, and white, 13 $\frac{3}{4}$ inches long, native name Aviya, tribes Maipua and Jare ... (PURARI DELTA)	0	10	0
96	(9098)	Carved wood club, decorated in red, black, and white, 29 inches long, native name Aviya, tribes Maipua and Jare ... (PURARI DELTA)	1	0	0
97	(9258)	Carved wood club, decorated in red, black, and white, 15 $\frac{1}{2}$ inches long, native name Aviya, tribes Maipua and Jare ... (PURARI DELTA)	0	17	6
98	(9582)	Adze or axe (reversible) with jade head, 28 by 11 $\frac{1}{2}$ inches ... ..	4	0	0
99	(9008)	Adze or axe (reversible) with stone head, 30 $\frac{1}{2}$ by 13 $\frac{1}{2}$ inches, native name Ela, tribe Eveda ... .. (PURARI DELTA)	2	10	0
100	(9581)	Axe with jade head, 24 $\frac{1}{2}$ by 13 inches ... ..	4	0	0
101	(9588)	Adze with jade head, 15 $\frac{3}{4}$ inches long ... ..	3	0	0
102	(9009)	Adze or axe (reversible) with stone head, 24 by 10 $\frac{1}{2}$ inches ... ..	1	15	0
103	(9615)	Carved wood ceremonial adze in the form of a figure, 22 by 22 inches ... (GILBERT ISLAND)	2	0	0

## CATALOGUE No. 26.

			£	s.	d.
104	(9590)	Jade sago pounder in wood haft, 13 inches long ... ..	1	0	0
105	(9589)	Stone sago pounder in wood haft, 23¼ by 12½ inches ... ..	3	3	0
106	(9203)	Bull-roarer of carved hard wood, decorated with white, 22 inches long, 3 inches broad, native name Emouno, tribe Jare ... (PURARI DELTA)	1	10	0
107	(7626)	Carved wood canoe ornament, partly decorated in black, 14½ inches high	1	5	0
108	(7627)	Carved wood canoe ornament, partly decorated black, 5 inches high ...	0	15	0
109	(9189)	Bull-roarer of carved hard wood, decorated in red, black, and white, 36¾ inches long, 4½ inches broad, native name Emouno, tribe Jare ... .. (PURARI DELTA)	2	0	0
110	(9165)	Carved bamboo rouge box, decorated in black, 5½ inches high, native name Ena ... .. (PURARI DELTA)	0	7	6
111	(7624)	Carved wood canoe ornament, partly decorated in black, 16 inches high ...	1	5	0
112	(9199)	Bull-roarer of carved hard wood, decorated with white, 22¾ inches long, 2¾ inches broad, native name Emouna, tribe Jare ... (PURARI DELTA)	1	10	0
113	(9160)	Carved bamboo rouge box, 8¾ inches high, native name Ena ... .. (PURARI DELTA)	0	7	6
114	(7625)	Carved wood canoe ornament, partly decorated in red and black, 10½ inches high ... ..	1	0	0
115	(7628)	Carved wood canoe ornament, decorated in red and black, 10¼ inches high	0	17	6
116	(9061)	Carved bamboo rouge box, 9¼ inches high, native name Ena ... .. (PURARI DELTA)	0	7	6
117	(9200)	Bull-roarer of carved hard wood, decorated in white, 17½ inches long, 2¼ inches broad, native name Emouno, tribe Jare (PURARI DELTA)	1	0	0
118	(6769)	Network bag, ornamented with shells and boar tusks ... ..	0	12	6
119	(9535)	Network bag, ornamented with seeds, shells, carved wood mask, and a human bone ... ..	1	15	0
120	(9202)	Bull-roarer of carved hard wood, 16 inches long, 2 inches broad, native name Emouno, tribe Jare ... .. (PURARI DELTA)	0	15	0
121	(9167)	Carved cocoanut sago spoon, native name Dakoi ... (PURARI DELTA)	0	7	6
122	(6766)	Carved wood head rest with bamboo supports, 19¼ inches long ... ..	1	10	0
123	(9169)	Carved cocoanut sago spoon, native name Dakoi ... (PURARI DELTA)	0	10	0
124	(7012)	Ornament of white shell and wood covered with string and shells ...	0	10	0
125	(7002)	Breast ornament of 23 boar tusks and a shell, 13 inches long ... ..	0	15	0
126	(6606)	Club of hard wood with the carving filled in white, 26¾ inches long, 4 inches broad ... ..	1	5	0
127	(9609)	Fish spear with line attached, 33½ inches long (GERMAN NEW GUINEA)	0	10	0
128	(9606)	do. do. 27½ do. (GERMAN NEW GUINEA)	0	10	0
129	(4813)	Bamboo decapitating knife, the handle bound with string, 16¼ inches long	0	7	6
130	(4806)	do. do. 15½ do.	0	12	6



# CATALOGUE No. 26.

			£	s.	d.
131	(9630)	Implement for drilling (tradaena shell) armlets, consisting of a bamboo drill, 48½ inches long, weighted with a stone, and a wood block hollowed in the centre containing a piece of tradaena shell bound round with split cane and partly drilled; the cane binding keeps the drill in position; on the side of the block is a finished armlet ... (GERMAN NEW GUINEA)	1	10	0
132	(9155)	Carved wood packing stick bound with cane, 6½ inches long, native name Kopea, tribe Maipua ... .. (PURARI DELTA)	0	2	6
133	(4222)	Woman's head ornament, made of cane and ornamented with dog's teeth	0	10	0
134	(7010)	Ornament of two boar tusks, hair and feathers ... ..	0	10	0
135	(7129)	Ornament of eight boar tusks, fibre, nut rattles and feathers ... ..	1	1	0
136	(9542)	Hair ornament of white shell and pierced tortoiseshell, fastened to a bone pin, 4¾ inches by 2¼ inches .. .. .	0	15	0
137	(9545)	Ornament of white shell and pierced tortoiseshell, fastened to a bone pin, 5 by 2½ inches ... .. .	0	15	0
138	(9153)	Carved wood packing stick bound with cane, 9 inches long, native name Kopea, tribe Maipua ... .. (PURARI DELTA)	0	3	6
139	(9036)	Head rest of carved wood standing on three legs, decorated in red, black, and white, 24 inches long, native name Aaria, tribe Maipua ... .. (PURARI DELTA)	1	0	0
140	(4833)	Carved wood stool standing on four feet, 37 inches long ... ..	2	2	0
141	(9152)	Dancing mask of cane, 17¼ by 8½ inches ... ..	1	5	0
142	(x334)	Pig catcher, cane frame and string net, 41 inches long, 17½ inches broad	0	15	0
143	(9109)	Cane and fibre mask, decorated in red, black, and white, 8¾ by 5 inches	0	12	6
144	(9038)	Fish trap made of cane, 39 inches long, native name Penane, tribe Mouro (PURARI DELTA)	0	10	0
145	(x540)	Arm-guard of fibre, decorated in red, black, and white, 8¾ by 5 inches ...	0	5	0
146	(4837)	Carved wood stool, 26 inches long ... ..	1	15	0
147	(x541)	Arm-guard of fibre, decorated in red, black, and white, 8¾ by 5¼ inches...	0	5	0
148	(891)	Lime knife or spatula of carved hard wood, 18¼ inches long ... ..	0	8	0
149	(2492)	do. do. 25 do. (LOGEIA)	0	10	0
150	(884)	do. do. 11¾ do. ... ..	0	5	0
151	(9843)	Pestle of carved black wood, with figure handle, 11½ inches long... .. (TROBRIAND ISLAND)	0	15	0
152	(x880)	Lime knife of carved black wood, with clapper handle, 14¼ inches long... .. (WOODLARK ISLAND)	0	7	6
153	(9842)	Pestle of carved black wood, with figure handle, 14 inches long ... .. (TROBRIAND ISLAND)	0	15	0
154	(2237)	Lime knife of carved wood, 14 inches long .. .. (LOUISIADES)	0	10	6
155	(9837)	Lime knife of carved black wood, 12 inches long ... (TROBRIAND ISLAND)	0	7	6
156	(9840)	do. 18½ do. (TROBRIAND ISLAND)	0	7	6
157	(6129)	do. 13 do. (TROBRIAND ISLAND)	0	6	0

## CATALOGUE No. 26.

			£	s.	d.
158	(9844)	Mortar of carved black wood, 12½ inches long ... (TROBRIAND ISLAND)	0	15	0
159	(9836)	Lime knife of carved black wood, with figure handle, 10 inches long ... (TROBRIAND ISLAND)	1	0	0
160	(9839)	Lime knife of carved black wood, 11¼ inches long (TROBRIAND ISLAND)	0	5	0
161	(2316)	do. with clapper handle, 10 inches long ... (TROBRIAND ISLAND)	0	10	0
162	(7621)	Pestle of carved black wood, figure handle, 6¾ inches long ... (TROBRIAND ISLAND)	0	7	6
163	(9845)	Mortar of carved black wood, 4 inches high (TROBRIAND ISLAND)	0	7	6
164	(7621)	do. 3½ do. (TROBRIAND ISLAND)	0	5	0
165	(2255)	Lime knife of carved black wood, 8 inches long ... (MILNE BAY)	0	5	0
166	(2488)	do. 9¼ do. (LOUISIADE ISLAND)	0	5	0
167	(895)	do. 10¼ do. (TROBRIAND ISLAND)	0	5	0
168	(5967)	do. 11 do. (TROBRIAND ISLAND)	0	5	0
169	(6095)	do. 14½ do. (ISUDAU)	0	10	0
170	(9117)	Carved wood comb, decorated black and white, 15¼ inches long, native name Oonayi ... (PURARI DELTA)	0	10	0
171	(6074)	Carved nut charm, 3¼ inches long ... (KORIKI)	0	15	0
172	(9141)	Carved wood comb, decorated red, black, and white, 14¼ inches long, native name Oonayi ... (PURARI DELTA)	0	15	0
173	(9126)	Carved wood comb, decorated black and white, 16½ inches long, native name Oonayi ... (PURARI DELTA)	0	10	0
174	(3346)	Carved wood comb, decorated black and white, 16 inches long ...	0	10	0
175	(9120)	do. do. 13½ do. ...	0	10	0
176	(9131)	do. red, black, and white, and ornamented with feathers, 14½ inches long, native name Oonayi (PURARI DELTA)	0	10	0
177	(6505)	Carved nut charm, decorated red, black, and white, 4¾ inches long ...	0	10	0
178	(9134)	Carved wood comb, decorated black and white, 15½ inches long, native name Oonayi ... (PURARI DELTA)	0	10	0
179	(6508)	Carved nut charm, decorated white, 4½ inches long ...	0	15	0
180	(6069)	do. red, 4¾ do. ... (OROKOLO)	0	15	0
181	(4849)	Carved wood figure house charm, decorated white, 11 inches high ...	2	0	0
182	(4851)	do. do. red, black, and white, 14¾ inches high ...	2	0	0
183	(9616)	Carved wood idol, coloured red, 10½ inches high ...	1	15	0
184	(4853)	Carved wood figure house charm, with shell eyes, 10½ inches high ...	2	0	0
185	(4850)	Carved wood figure house charm, decorated white, 15 inches high ...	2	10	0
186	(4852)	Carved wood figure house charm, decorated white, 11¼ inches high ...	2	10	0

## CATALOGUE No. 26.

			£	s.	d.
187	(4906)	Carved wood paddle, with mask at end of handle, 77½ inches long, 6 inches broad ... .. (SELEO)	2	0	0
188	(5183)	Carved wood paddle, with mask at end of handle, 70 inches long, 5 inches broad ... .. (SELEO)	2	0	0
189	(9623)	Carved wood paddle, decorated red and black, 57 inches long, 5 inches broad ... .. (SELEO)	1	0	0
190	(9624)	Carved wood paddle, decorated red and black, 50¼ inches long, 6½ inches broad... .. (SELEO)	1	0	0
191	(5180)	Carved wood paddle, decorated red, black, and white, 69½ inches long, 7½ inches broad ... ..	1	5	0
192	(9622)	Carved wood paddle, 69½ inches long, 7½ inches broad ( ANGRIFSHAFEN)	1	0	0
193	(9621)	Carved wood paddle, 72¼ inches long, 8¾ inches broad (ANGRIFSHAFEN)	1	0	0
194	(9104)	Carved wood idol, decorated red and white, and ornamented with grass, 45½ inches high ... ..	5	0	0
195	(2035)	Carved wood idol, decorated red and white, 16½ inches high ... ..	3	10	0
196	(9614)	Carved wood idol, decorated red and white, 21 inches high ... ..	2	0	0
197	(9103)	Carved wood idol, decorated red, white, and black, wearing a feather and cane head-dress and a carved bark belt ornamented with grass and feathers, 45½ inches high ... ..	6	6	0
198	(9613)	Carved wood idol, decorated red and white, 16½ inches high ... ..	2	0	0
199	(9612)	Carved wood idol, decorated red and white, 24 inches high ... ..	3	10	0
200	(9138)	Fibre and cane dancing mask, decorated red, black, and white, 9½ inches high, native name Kanipu, tribe Mouro ... .. (PURARI DELTA)	0	15	0
201	(9004)	Fibre and cane dancing mask, decorated red, black, and white, 28 inches high, native name Kanipu, tribe Apeope ... .. (PURARI DELTA)	1	5	0
202	(9006)	Fibre and cane dancing mask, decorated red, black, and white, 36 inches high, native name Kanipu, tribe Apeope ... .. (PURARI DELTA)	1	10	0
203	(9005)	Fibre and cane dancing mask, decorated red, black, and white, 26 inches high, native name Kanipu, tribe Apeope ... .. (PURARI DELTA)	1	10	0
204	(9071)	Fibre and cane dancing mask, decorated red, black, and white, 28 inches high, native name Kanipu, tribe Apeope ... .. (PURARI DELTA)	1	5	0









II

NEW ZEALAND





NEW ZEALAND

43



44



45



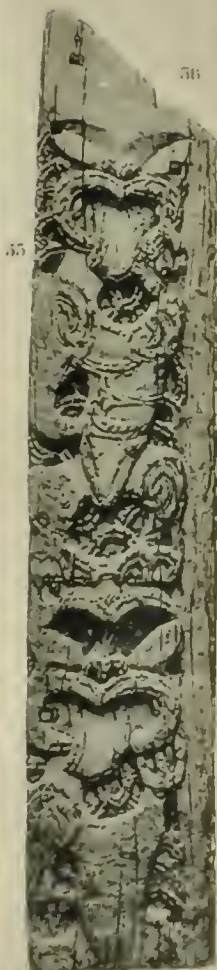




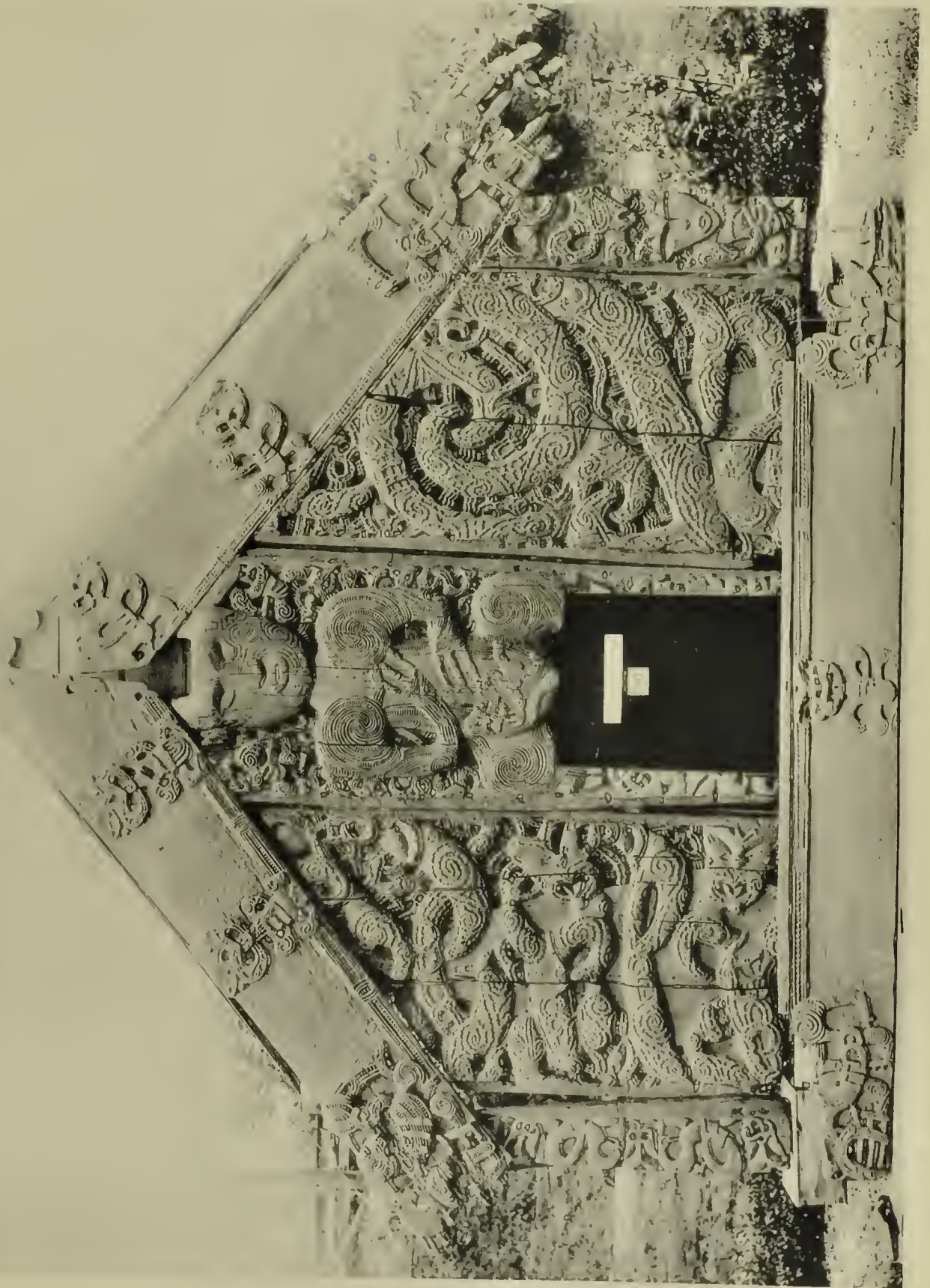
NEW ZEALAND



NEW ZEALAND









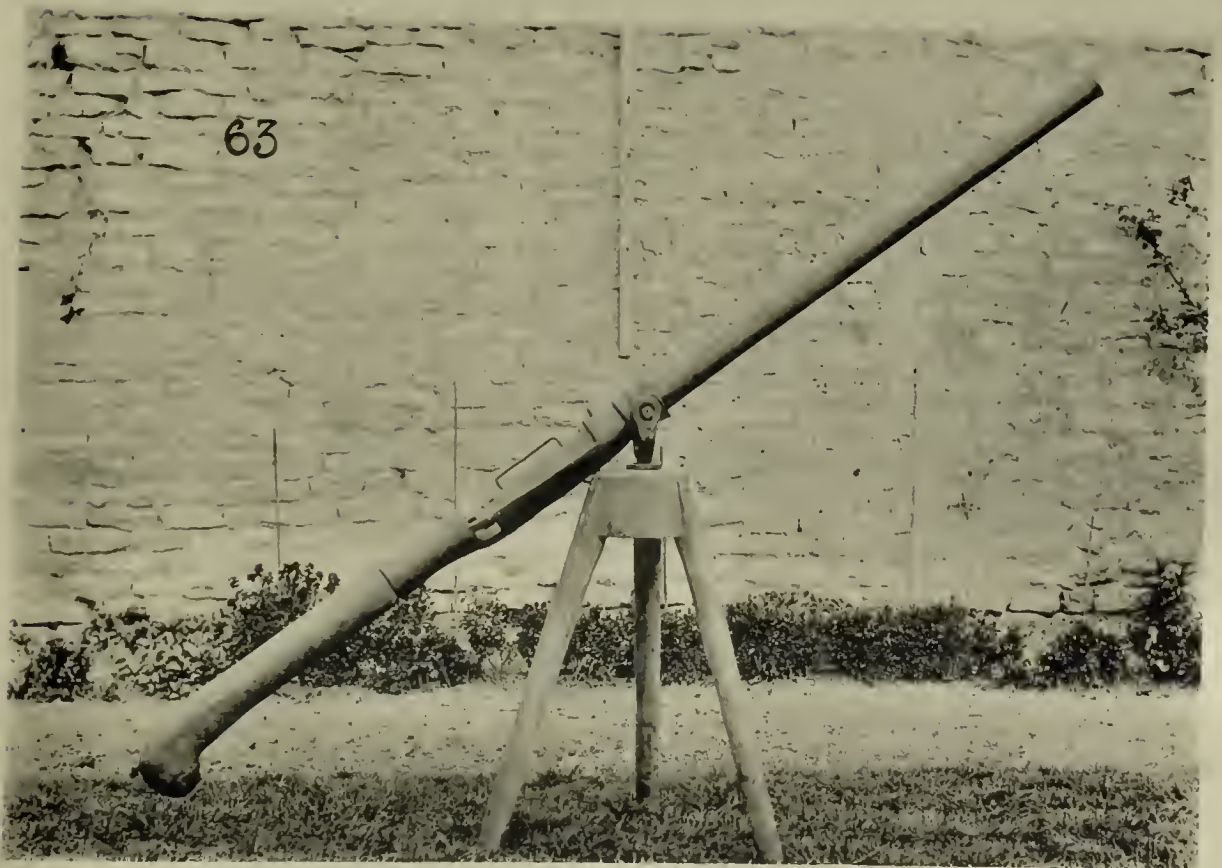








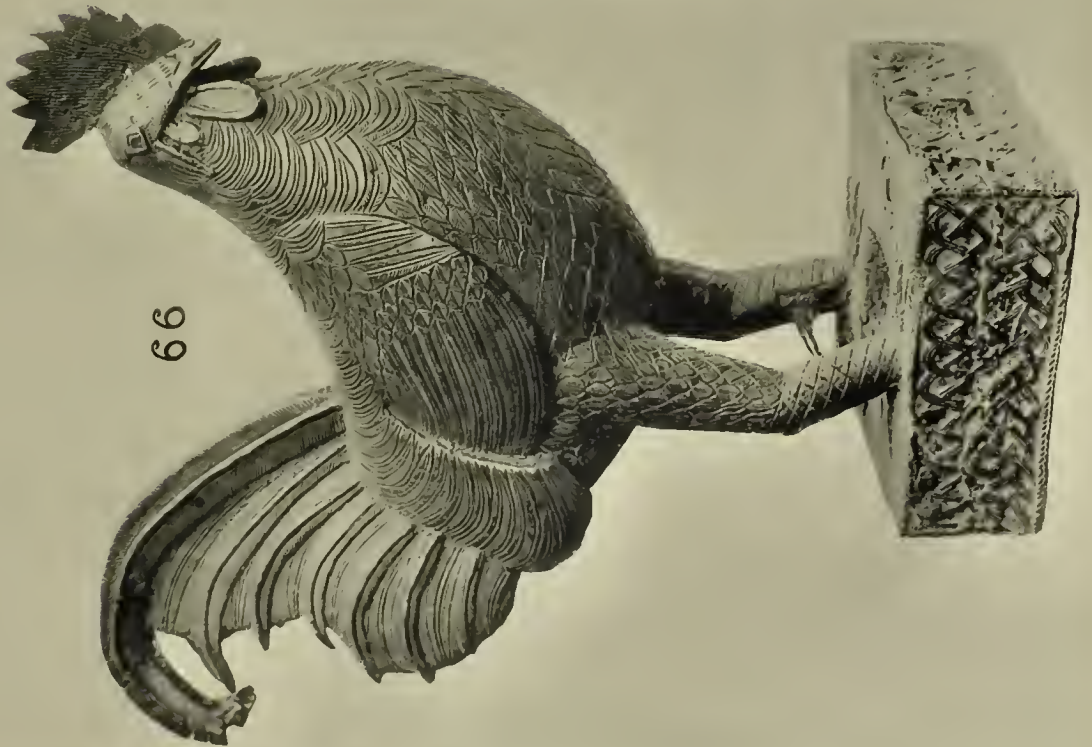
62



63



BENIN,  
W. AFRICA







68



69



70

BENIN.  
W. AFRICA



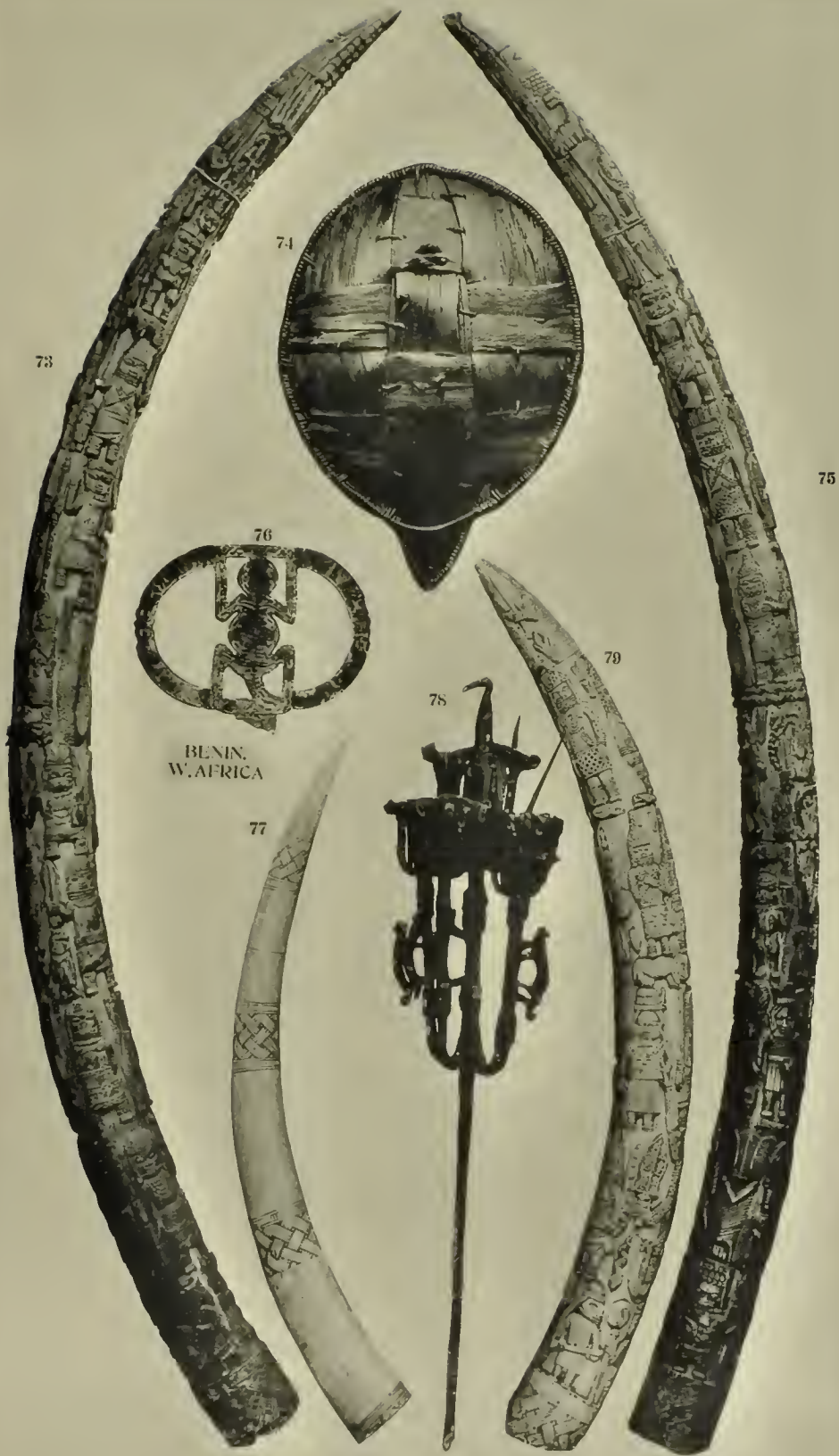
71



72







BENIN,  
W. AFRICA





80

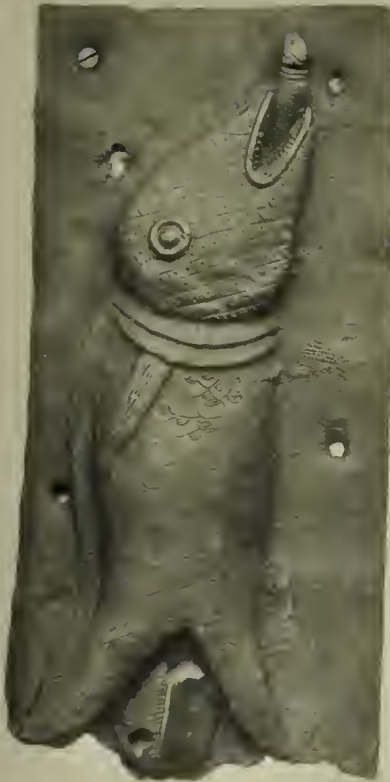


81



82

83



84

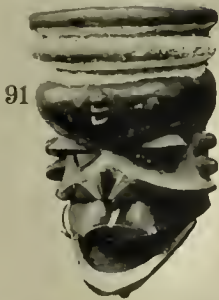


85



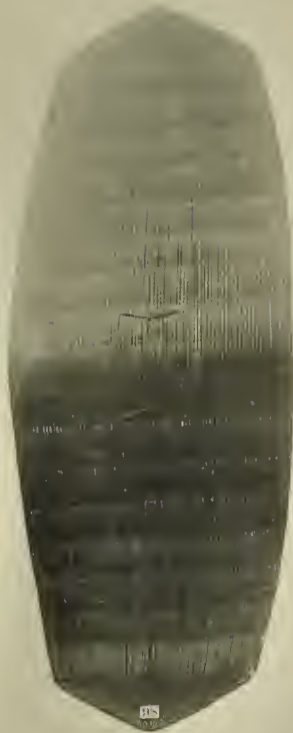
BENIN.  
W. AFRICA





AFRICA



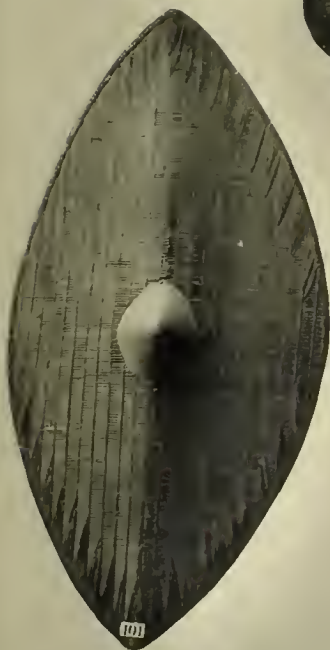


100



102

AFRICA



103



104



101









114

115

113

118

119

120

121



SAMOA









NEW  
CALEDONIA







NEW  
HEBRIDES







# CATALOGUE No. 27,

PUBLISHED BY

W. D. WEBSTER, COLLECTOR OF ETHNOGRAPHICAL SPECIMENS,  
OXFORD HOUSE, BICESTER, OXON, ENGLAND.

## ANCIENT BRONZE IMPLEMENTS.

					£	s.	d.	
1	(1846)	Bronze flanged celt, $6\frac{1}{2}$ by $2\frac{1}{4}$ inches ...	...	...	(CHIUSI, ITALY)	1	15	0
2	(9868)	do. do. do. 5 by $2\frac{1}{2}$ inches ...	...	...	(CO. CARLOW, IRELAND)	1	15	0
3	(7146)	do. do. do. $4\frac{3}{4}$ by $2\frac{1}{2}$ inches ...	...	...	(HOLT, WALES)	1	10	0
4	(8129)	do. socketed celt, 4 by $2\frac{1}{4}$ inches ...	...	...	(WORKINGTON, CUMB.)	1	0	0
5	(9856)	do. flanged celt, $4\frac{1}{4}$ by $2\frac{1}{2}$ inches ...	...	...	(BOYNE, IRELAND)	1	15	0
6	(7145)	do. do. do. $5\frac{1}{4}$ by $2\frac{1}{4}$ inches ...	...	...	(HOLT, WALES)	1	10	0
7	(7143)	do. do. do. $4\frac{1}{2}$ by $2\frac{1}{2}$ inches ...	...	...	(LLANFYLLIN, WALES)	1	10	0
8	(7844)	do. do. do. 6 by $2\frac{1}{2}$ inches ...	...	...	(LLANBERIS, WALES)	1	10	0
9	(6814)	do. sling bolt, 2 inches long ...	...	...	(FLORENCE, ITALY)	7	6	
10	(9877)	do. flanged celt., $3\frac{3}{4}$ by $1\frac{1}{2}$ inches ...	...	...	(CO. MEATH, IRELAND)	1	5	0
11	(9865)	do. celt, 5 by $3\frac{1}{4}$ inches ...	...	...	(IRELAND)	1	0	0
12	(9857)	do. flanged celt, 6 by $2\frac{3}{4}$ inches ...	...	...	(CO. ANTRIM, IRELAND)	2	0	0
13	(9853)	do. do. do. $6\frac{3}{4}$ by $2\frac{1}{2}$ inches ...	...	...	(WEST OF IRELAND)	1	15	0
14	(9854)	do. do. do. $5\frac{1}{2}$ by $2\frac{1}{4}$ inches ...	...	...	(ENNISKILLEN, IRELAND)	1	15	0
15	(9867)	do. do. do. 4 by $2\frac{1}{4}$ inches ...	...	...	(NORTH OF IRELAND)	1	10	0
16	(9870)	do. celt, $6\frac{1}{4}$ by $2\frac{3}{4}$ inches ...	...	...	(CO. KERRY, IRELAND)	1	0	0
17	(9848)	do. dagger, $6\frac{1}{2}$ inches long ...	...	...	(CO. ANTRIM, IRELAND)	10	0	
18	(9849)	do. spear head, $3\frac{1}{2}$ inches long ...	...	...	(CO. ANTRIM, IRELAND)	10	0	
19	(9863)	do. celt, $4\frac{1}{2}$ by 3 inches ...	...	...	(IRELAND)	1	0	0
20	(9852)	do. socketed celt, $2\frac{3}{4}$ by $2\frac{1}{2}$ inches ...	...	...	(NORTH OF IRELAND)	1	5	0
21	(9862)	do. celt, 7 by $4\frac{1}{4}$ inches ...	...	...	(SHANNON, IRELAND)	2	0	0
22	(6861)	do. sling bolt, $1\frac{1}{2}$ inches long ...	...	...	(GREECE)	0	15	0
23	(9874)	do. flanged celt, 3 by 2 inches ...	...	...	(IRELAND)	0	15	0
24	(9872)	do. celt, 5 by 3 inches ...	...	...	(CO. KERRY, IRELAND)	1	10	0
25	(9873)	Copper chisel, $3\frac{3}{4}$ by $\frac{1}{2}$ inch ...	...	...	(CO. MEATH, IRELAND)	1	0	0
26	(9864)	Bronze celt, $5\frac{1}{2}$ by 4 inches ...	...	...	(IRELAND)	1	10	0
27	(9846)	do. do. $5\frac{3}{4}$ by $3\frac{3}{4}$ inches... ...	...	...	(IRELAND)	1	10	0

# CATALOGUE No. 27.

## ANCIENT BRONZE IMPLEMENTS—*continued.*

			£ s. d.
28	(9858)	Bronze socketed celt, 4 by 3 $\frac{1}{4}$ inches ... .. (SHANNON, IRELAND)	1 15 0
29	(9875)	do. celt, 3 $\frac{1}{4}$ by 2 inches ... .. (IRELAND)	0 15 0
30	(9876)	do. socketed celt, 3 $\frac{1}{4}$ by 2 $\frac{1}{2}$ inches ... .. (SHANNON, IRELAND)	1 0 0
31	(8127)	do. flanged celt, 2 $\frac{3}{4}$ by 1 $\frac{3}{4}$ inches ... .. (CUMBERLAND)	0 7 6
32	(9860)	do. spear head, 4 $\frac{1}{4}$ by 1 $\frac{1}{4}$ inches ... .. (SHANNON, IRELAND)	1 5 0
33	(9861)	do. do. do. 4 by 1 $\frac{1}{2}$ inches ... .. (SHANNON, IRELAND)	1 5 0
34	(113)	do. do. do. 4 $\frac{1}{4}$ by 1 $\frac{1}{2}$ inches... .. (SCOTLAND)	0 7 6
35	(9866)	do. celt, 4 by 1 $\frac{3}{4}$ inches ... .. (IRELAND)	1 0 0
36	(9859)	do. spear head, 4 $\frac{1}{2}$ by 1 $\frac{1}{2}$ inches ... .. (WEST OF IRELAND)	1 5 0
37	(9851)	do. socketed celt, 2 by 1 $\frac{3}{4}$ inches ... .. (WEST OF IRELAND)	1 5 0
38	(8128)	do. celt, 6 by 4 inches ... .. (CUMBERLAND)	1 5 0
39	(9869)	do. socketed celt, 3 $\frac{1}{4}$ by 2 $\frac{1}{2}$ inches ... .. (CO. MEATH, IRELAND)	1 10 0
40	(9871)	do. celt, 3 $\frac{1}{2}$ by 3 inches ... .. (CO. KERRY, IRELAND)	1 5 0

## NEW ZEALAND.

41	(10157)	TUTAKA, elaborately carved male figure, which formed part of the ridge pole that projected over the verandah of a Maori Rununga whare that formerly stood at TAIHEKIE, LAKE ROTOITI, 68 $\frac{1}{4}$ inches high, 27 inches wide ... ..	40 0 0
42	(10158)	TUTAKA, similar specimen to No. 41, and from the same ridge pole, 70 inches high, 26 inches wide ... ..	40 0 0
43	(9527)	Carved wood slab from a Maori whare, 48 inches high, 11 inches wide ...	5 5 0
44	(10156)	POTOKOMANAWHA, post used for supporting the ridge pole in the interior of a Maori Rununga whare; the illustration only shows the figure at base of post. In the fixing of this post a slave was usually sacrificed, and after his heart was extracted the body was buried beneath it. Figure 52 $\frac{1}{2}$ inches high, full length 156 $\frac{1}{2}$ inches ... .. (TOLAGO BAY)	25 0 0
45	(9528)	Carved wood slab from a Maori whare, 53 inches high, 8 $\frac{1}{2}$ inches broad...	5 5 0
46	(10163)	POU-POU, carved panel from the front of a Maori Rununga whare that formerly stood at TOLAGO BAY, 68 inches long, 6 $\frac{3}{4}$ inches broad; the following panels are from the same whare, 47, 48, 49, 51, 52, 53, 54 ...	1 5 0
47	(10162)	POU-POU, 75 inches high, 7 inches broad ... ..	1 10 0
48	(10161)	POU-POU. 83 do. 6 $\frac{1}{2}$ do. ... ..	1 10 0
49	(10166)	POU-POU, 99 do. 7 $\frac{1}{2}$ do. ... ..	1 15 0
50	(10168)	PAKAHOKAHO, carved skirting board from the front of a Maori whare, that the door slides in (the whare was partly buried in the Tarawera eruption), 95 inches long, 6 inches wide ... ..	5 0 0
51	(10165)	POU-POU, 104 $\frac{1}{2}$ inches high, 6 $\frac{3}{4}$ inches wide ... ..	1 15 0
52	(10159)	POU-POU, 81 do. 6 do. ... ..	1 10 0

## CATALOGUE No. 27.

### NEW ZEALAND—*continued.*

		£	s.	d.
53 (10160)	POU-POU, 77½ inches high, 6¾ inches wide ... ..	2	10	0
54 (10164)	POU-POU, 58¼ do. 6¼ do. ... ..	1	5	0
55 (10172)	POU-POU, 62½ do. 13 do. ... ..	5	0	0
56 (10170)	POU-POU, 47½ do. 9½ do. ... ..	1	10	0
57 (10173)	POU-POU, 64 do. 12½ do. ... ..	3	10	0
58 (10182)	POU-POU, 40½ do. 9¾ do. ... ..	1	0	0
59 (10171)	POU-POU, 68 do. 11 do. ... ..	5	0	0
60 & 61 (10212)	Twelve large carvings forming the front and side pieces of a Maori Pataka, called MARU, consisting of two side pieces, "NGA PAKITARA," 144 inches long, 26 inches broad (fig. 61). PAKAHOKAHO, carved skirting board to verandah, 102 inches long, 12 inches broad. NGA MAHI, two gable boards to verandah, 72 inches long, 12 inches broad, and the entire front of seven pieces 66 inches high, 102 inches wide. This PATAKA was built and used by the NGATIWHAKA-AUE tribe and called by them MARU. The tribal name of a neighbouring tribe at Hawaki was NGATI-MARU, and when they heard that the NGATIWHAKA-AUE tribe had named their food house "MARU" they considered it an insult, and made a warlike raid on that tribe and defeated them. The beaten tribe took down the food house and hid it. Several years after it was taken to Wairoa, and was there at the eruption of Tarawera. After that it was removed to Peheangi, on Lake Rotorua, from thence to Rotorua ...	100	0	0

### CHINA.

62 (8027)	Large cast iron bell with raised ornamentation and inscription, 33 inches high, 26½ inches diameter. This bell and the following two specimens were sent to England several years ago by Sir Fleming Stenhouse ...	7	10	0
63 (8614)	Old breech-loading swivel cannon with wood stock ; the tripod stand does not belong to it, but was made in England, 109 inches long ... ..	5	0	0
64 (8471)	Military scaling ladder of bamboo with rope rungs, and three iron ones for tightening same, 210 inches long ... ..	2	10	0
65 (8621)	Full sized bamboo sedan chair with teak wood shafts, brass mounted at ends ... ..	5	0	0

### AFRICA.

66 (10129)	Bronze cock, standing on a square base covered with interlaced ornamentation, with three buffalo heads in front and a maltese cross on top, 21⅛ inches high ... .. (BENIN CITY)	40	0	0
67 (10130)	Bronze plaque with three figures, the outer ones striking double bells, 19 inches high, 15 inches wide ... .. (BENIN CITY)	40	0	0
68 (9933)	Bronze figure holding three assegais in his right hand and a shield in his left, 9¾ inches high ... .. (BENIN CITY)	7	10	0
69 (10221)	Carved wood box in the form of a fish holding its tail in its mouth, with cocoanut-shell eyes ; length from head to tail 38 inches (BENIN CITY)	3	10	0
70 (9920)	Bronze figure holding a staff in each hand, 8 inches high (BENIN CITY)	5	0	0
71 (10222)	Carved wood ram's head, 14 inches high ... .. (BENIN CITY)	7	10	0

## CATALOGUE No. 27.

### AFRICA—*continued.*

		£	s.	d.
72 (10137)	Bronze cock on square base, 17 inches high ... .. (BENIN CITY)	20	0	0
73 (9931)	Large carved elephant tusk, 93 $\frac{3}{4}$ inches long ... .. (BENIN CITY)	120	0	0
74 (9815)	Oval shield made of interlaced strips of bark, 24 $\frac{1}{2}$ inches long, 18 inches broad ... .. (BENIN CITY)	1	10	0
75 (9930)	Large carved elephant tusk, 91 $\frac{1}{2}$ inches long ... .. (BENIN CITY)	100	0	0
76 (10127)	Piece of hammered brass work, 11 by 13 $\frac{3}{4}$ inches ... .. (BENIN CITY)	0	10	0
77 (9929)	Elephant tusk with four bands of interlaced ornamentation 43 $\frac{1}{4}$ inches long ... .. (BENIN CITY)	5	5	0
78 (10223)	Wrought iron standard with five points, each ending with a number of points of various forms at top, 43 $\frac{1}{2}$ inches high ... .. (BENIN CITY)	10	0	0
79 (10139)	Large carved elephant tusk, 56 $\frac{3}{4}$ inches long ... .. (BENIN CITY)	50	0	0
80 (9918)	Bronze figure plaque, 13 inches high, 5 inches broad ( do. )	7	10	0
81 (9915)	Bronze fish plaque, 18 $\frac{1}{4}$ do. 6 do. ... .. ( do. )	7	10	0
82 (9917)	Bronze figure plaque, 13 $\frac{3}{4}$ do. 6 $\frac{3}{4}$ do. ... .. ( do. )	7	10	0
83 (9913)	Bronze fish plaque, 14 $\frac{1}{2}$ do. 7 do. ... .. ( do. )	7	10	0
84 (9926)	Portion of a bronze plaque with two figures beating tom-toms and another holding a bow in his left hand, 10 $\frac{1}{4}$ inches high, 5 $\frac{1}{4}$ inches broad (BENIN CITY)	10	0	0
85 (9916)	Bronze fish plaque, 15 inches high, 8 inches broad ... (BENIN CITY)	7	10	0
86 (8827)	Carved wood mask with moveable lower jaw and ornamented with grass (NIGER PROTECTORATE)	3	3	0
87 (8911)	Carved wood mask decorated in red, black and white, and ornamented with grass ... .. (LIBERIA)	2	10	0
88 (8847)	Carved wood mask decorated in black, yellow and white, and ornamented with grass ... .. (NIGER PROTECTORATE)	2	0	0
89 (10226)	Small carved wood mask coloured black ... .. (NIGER PROTECTORATE)	0	12	6
90 (8823)	Small wood mask decorated in black, yellow and white ... .. (NIGER PROTECTORATE)	1	5	0
91 (8837)	Carved wood mask with movable jaw, decorated in black, yellow and white ... .. (NIGER PROTECTORATE)	2	0	0
92 (8848)	Carved wood mask coloured black ... .. (NIGER PROTECTORATE)	1	15	0
93 (8822)	Carved wood mask decorated in red, black and white ... .. (NIGER PROTECTORATE)	1	10	0
94 (10144)	Carved wood mask decorated in red, black and white ... .. (LIBERIA)	2	0	0
95 (10143)	Carved wood mask decorated in red, black, yellow and white, and ornamented with various pieces of coloured cloth ... .. (LIBERIA)	1	10	0
96 (4671)	Shield of split cane lashed together with grass, and bound round edge with raw hide, 50 by 21 $\frac{1}{4}$ inches ... .. (CONGO)	1	0	0



# CATALOGUE No. 27.

## AFRICA—*continued.*

			£	s.	d.
97	(7639)	Shield of hide with boss in centre; a piece of wood runs the full length, which also forms the grip, 46 by 14½ inches ... ..	2	10	0
98	(1794)	Shield of narrow pieces of wood joined together by fine canework, part of which is stained red, 50½ by 18½ inches ... .. (LOANDA)	2	0	0
99	(7638)	Shield of crocodile skin with boss in centre, 25 by 22 inches diam. (NUBIA)	1	0	0
100	(8566)	Shield of raw hide with raised ornamentation and boss in centre, 15 inches diameter ... .. (SOUDAN)	1	5	0
101	(x660)	Shield composed of narrow strips of wood bound together with fine cane-work and large wood boss in centre, 40½ by 20 inches ... (UGANDA)	1	15	0
102	(x677)	Shield of raw hide ornamented with two brass mounts, 9 inches diameter (SOUDAN)	0	17	6
103	(10080)	Shield of hide which has originally been decorated with white rings, but which are now hardly discernible, 34½ by 33 inches (FAN COUNTRY)	2	10	0
104	(6689)	Shield of hide decorated in red, black and white, 45 by 34 inches (MASAI)	2	10	0

## FIJI.

105	(10227)	Club with elaborately carved head and grip, 44½ inches long ... ..	5	5	0
106	(9970)	Club of black wood with carved head and grip, 35¼ inches long ... ..	4	0	0
107	(9)	Club with fan-shaped head, 35½ inches long, 11 inches broad ... ..	1	10	0
108	(9428)	Paddle-shaped club with carved head, 47 inches long, 11¼ inches broad ...	3	0	0
109	(5703)	do. do. do. 38¼ inches long, 8¾ inches broad	3	0	0
110	(5704)	Very large pine-headed club, 32¾ inches long, head 23 inches diameter ...	4	0	0
111	(3956)	Tappa beater with carved band and lines, 15¼ inches long ... ..	1	0	0
112	(4020)	Food dish standing on three legs with square handle carved on all four sides, 14½ by 6¼ inches ... ..	1	5	0
113	(7539)	Boy's pine-headed club, 31¾ inches long ... ..	0	15	0

## SAMOA.

114	(2536)	Club with diamond-shaped head and carved handle, head 5½ by 1½ inches, length 40 inches ... ..	3	0	0
115	(8433)	Club with carved diamond-shaped head, 42½ inches long, head 4 by 2¼ inches ... ..	3	0	0
116	(8525)	Club with flat head carved all over, 27¾ inches long, 4 inches broad ...	2	0	0
117	(3137)	Club with flat head carved all over, 36½ inches long, 6½ inches broad ...	3	0	0
118	(5363)	Club with diamond-shaped head carved all over, 29 inches long, head 5 by 3½ inches ... ..	3	0	0
119	(8939)	Club carved all over, 38¼ inches long, 3 inches broad ... ..	3	0	0
120	(8938)	Club with flat head carved all over, 43 inches long, 5¾ inches broad ...	3	0	0
121	(8945)	Club with carved head and bands on handle, 40½ inches long, 5½ inches broad	2	10	0

## CATALOGUE No. 27.

### HERVEY ISLAND.

		£	s.	d.
122 (8519)	Elaborately carved paddle, 41 inches long, blade 16½ by 10½ inches ...	3	3	0
123 (3175)	do. 33¾ do do. 13½ by 7¾ do. ...	2	2	0
124 (10063)	do. 46¾ do. do. 12¾ by 7 do. ...	3	3	0
125 (8414)	do. 43¾ do. do. 11½ by 5¾ do. ...	2	10	0
126 (8521)	do. 43 do. do. 17½ by 10 do. ...	4	0	0

### NEW CALEDONIA.

127 (10062)	Club with head in the form of a bird's head, 27¾ inches long, head 8½ inches	1	15	0
128 (10059)	Club with shaped head, 28 inches long ... ..	1	10	0
129 (8527)	Club with head in the form of a bird's head, 30¼ inches long, head 12¾ inches ... ..	2	0	0
130 (8427)	Club with natural root head, 26½ inches long ... ..	1	5	0
131 (10058)	Club with shaped head, 26¼ inches long ... ..	1	10	0
132 (10061)	Club with head in the form of a bird's head, 26½ inches long, head 9¼ inches	1	15	0
133 (10060)	Club or pick with curious shaped head, 22½ inches long, head 13¾ inches	1	15	0
134 (10052)	Axe with dark jade head of inferior quality; the handle has carved on it small masks, bound with cord, 22½ inches long, head 7 by 7½ inches	12	0	0
135 (10064)	Network bag for sling bolts ... ..	0	10	0
136 (10079)	Sling bolt, 2½ inches long ... ..	0	7	6
137 (10069)	do. 2¾ do. ... ..	0	7	6
138 (10046)	Fine jade adze head, 5 by 4 inches ... ..	3	10	0
139 (10066)	Sling ... ..	0	5	0
140 (10051)	Axe with rough jade head, handle bound with cord and ornamented with shells, 24 inches long, head 6¾ by 5½ inches. ... ..	10	0	0

### NEW HEBRIDES.

141 (8706)	Club with shaped head, a mask is carved on each side, 31¼ inches long ...	2	10	0
142 (8895)	Club with shaped head, 42¾ inches long ... ..	1	15	0
143 (8300)	Club with shaped and carved head, 38¾ inches long ... ..	2	0	0
144 (8430)	Club with shaped head, carved at end of handle, 33¾ inches long ...	1	10	0
145 (8418)	Club with shaped head, 39¼ inches long ... ..	1	15	0
146 (8582)	Club with shaped head, carved at end of handle, 39½ inches long ...	1	15	0
147 (1163)	Club with shaped head, 32¾ inches long .. ...	1	1	0

MISCELLANEOUS.

£ s. d.

- |            |         |   |               |
|------------|---------|---|---------------|
| <b>148</b> | (10081) | Votive sword, with heavy iron blade covered on both sides with incised inscription, taken by the recent French expedition from the Mosque of Swords at Kaironan, Tunis. The handle is wood, painted green and rivetted to blade, which is very heavy, and measures $41\frac{1}{2}$ inches long, 4 inches broad at end, and $\frac{5}{8}$ inch thick. ... .. | <b>10 0 0</b> |
| <b>149</b> | (10211) | Rattle made with the tops of two human skulls covered with skin, used by the Fakirs ... .. (NORTHERN INDIA)   | <b>2 10 0</b> |
| <b>150</b> | (8546)  | Bolas for catching cattle, made with three round stones covered with hide and hide cords ... .. (SOUTH AMERICA)   | <b>1 1 0</b>  |
| <b>151</b> | (8434)  | Double bow, for shooting clay balls, and network bag containing the latter, bow 51 inches long ... .. (SIAM)  | <b>1 0 0</b>  |
| <b>152</b> | (5107)  | Old flint-lock American carbine, which has been traded away at some time to the Fijians, who have inlaid the stock with shaped pieces of whale's teeth ... .. (FIJI)  | <b>2 10 0</b> |
| <b>153</b> | (10224) | Flint-lock swivel boat gun, with brass bell-mouthed barrel and mounts, captured in 1895 at the town of Brohimi on the Benin River during the expedition against Nanna, barrel 24 inches long ... .. (W. AFRICA)   | <b>3 10 0</b> |
| <b>154</b> | (8455)  | Pair of heavy wood stirrups, elaborately carved, $9\frac{3}{4}$ inches high, $8\frac{3}{4}$ inches broad ... .. (CHILI)   | <b>1 10 0</b> |









